

## **Erratum**

### **Molecular phylogeny and genetic differentiation of *Tanakia himantegus* complex (Teleostei: Cyprinidae) in Taiwan and mainland China**

Chia-Hao Chang<sup>1</sup>, Wen-Wen Lin<sup>2</sup>, Yi-Ta Shao<sup>3</sup>, Ryoichi Arai<sup>4</sup>, Toshihiro Ishinabe<sup>5</sup>, Takayoshi Ueda<sup>6</sup>, Masaru Matsuda<sup>7</sup>, Hitoshi Kubota<sup>8</sup>, Feng-Yu Wang<sup>1</sup>, Nian-Hong Jang-Liaw<sup>9</sup>, and Hsiao-Wei Kao<sup>10,\*</sup>

<sup>1</sup>Marine Research Station, Institute of Cellular and Organismic Biology, Academia Sinica, Jiaoshi, I-Lan County 26242, Taiwan

<sup>2</sup>Department of Marine Biotechnology, National Kaohsiung Marine University, Kaohsiung 811, Taiwan

<sup>3</sup>Research Center for Biodiversity, Academia Sinica, Nankang, Taipei 115, Taiwan

<sup>4</sup>Department of Zoology, University Museum, University of Tokyo, Tokyo 113-0033, Japan

<sup>5</sup>Kannonzaki Nature Museum, Yokosuka 239-0813, Japan

<sup>6</sup>Department of Biology, Faculty of Education, Utsunomiya University, Utsunomiya 321-8505, Japan

<sup>7</sup>Center for BioScience Research and Education, Utsunomiya University, Utsunomiya 321-8505, Japan

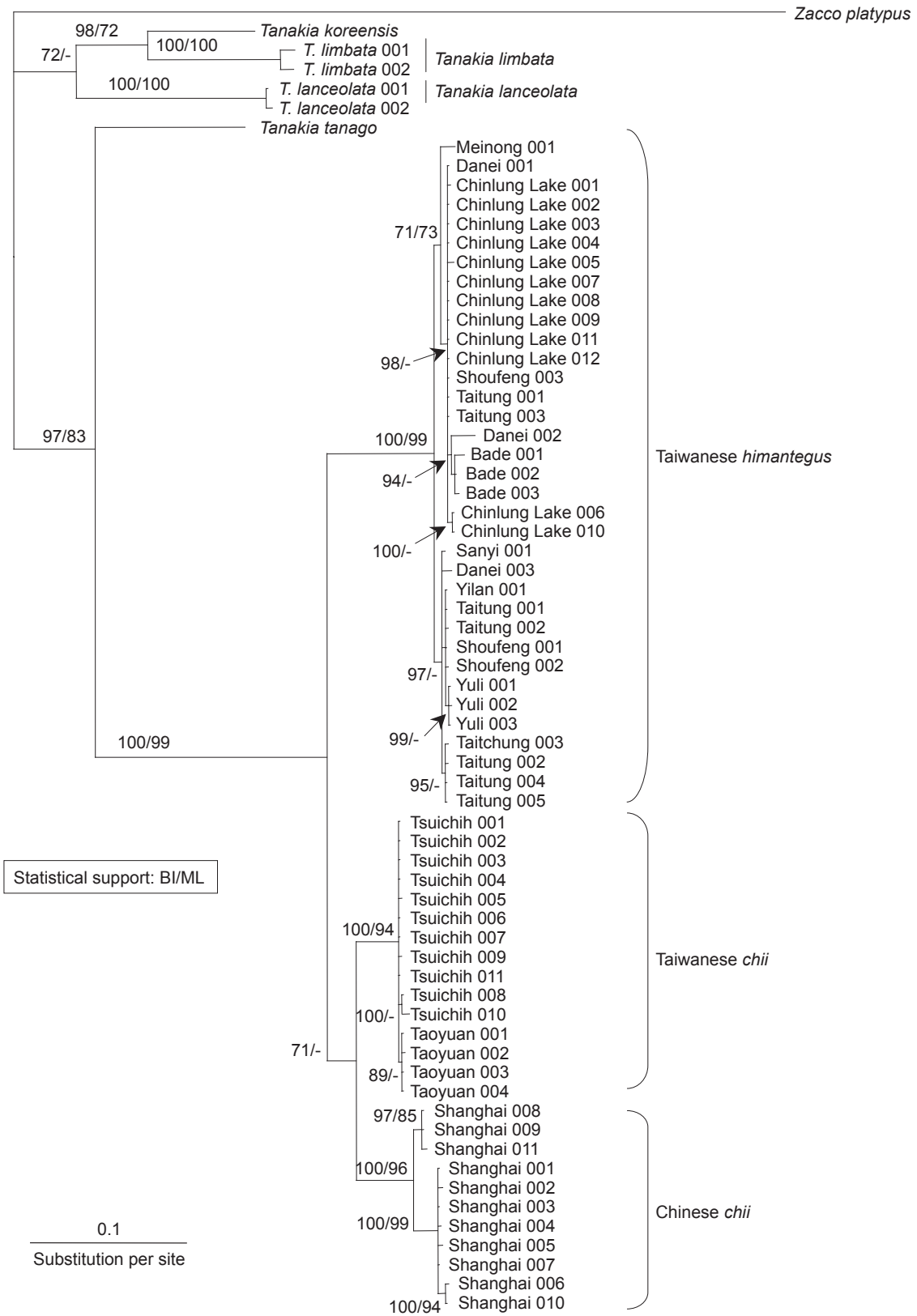
<sup>8</sup>Tochigi Prefectural Fisheries Experimental Station, Ohtawara 324-0404, Japan

<sup>9</sup>Department of Zoology, National Museum of Natural Science, 1st Kuang-Chien Rd., Taichung 404, Taiwan

<sup>10</sup>Department of Life Sciences, Institute of Life Sciences, National Chung Hsing University, Taichung 402, Taiwan

[Article in *Zoological Studies* **48**(6): 823-834 (2009)]

In page 829, on figure 3 should be revised as following



**Fig. 3.** Phylogenetic tree of the *Tanakia himantegus* complex in Taiwan and China inferred from mitochondrial cytochrome *b* DNA sequences. The tree was constructed by the Bayesian method. Statistical support is marked on the branches when > 70%.