

A new species of *Opisthoteuthis*, *O. dongshaensis* sp. nov., from the South China Sea (Octopoda: Cirrata: Opisthoteuthidae)

Chung-Cheng Lu*

Department of Life Sciences, National Chung Hsing University, Taichung, Taiwan

(Accepted October 19, 2009)

Chung-Cheng Lu (2010) A new species of *Opisthoteuthis*, *O. dongshaensis* sp. nov., from the South China Sea (Octopoda: Cirrata: Opisthoteuthidae). *Zoological Studies* 49(3): 405-420. A new species of the cirrate octopod *Opisthoteuthis dongshaensis* sp. nov. is described from the vicinity of the Dong Sha Is., South China Sea. The species is unique in the mature males having enlarged suckers on the distal field only on arms III and IV. Suckers on the distal field of arms I and II of mature males are not enlarged. This is the 2nd nominal species of *Opisthoteuthis* reported from the South China Sea, the other being *O. japonica*. <http://zoolstud.sinica.edu.tw/Journals/49.3/405.pdf>

Key words: *Opisthoteuthis*, Dong Sha Is., Pratas Is., South China Sea.

The genus *Opisthoteuthis* of the family Opisthoteuthidae is speciose. Many species have been named since erection of the genus by Verrill (1883) for the type species *O. agassizii*. Robson (1932) recognized 6 species in the genus, and Voss (1988) listed 10 species. O'Shea (1999) included 4 more species, bringing the total to 14 species. In the most recent revision, Collins and Villanueva (2006) recognized 19 nominal species: *O. agassizii* Verrill, 1883; *O. depressa* Ijima and Ikeda, 1895; *O. grimaldii* Joubin, 1903; *O. extensa* Thiele, 1915; *O. medusoides* Thiele, 1915; *O. persephone* Berry, 1918; *O. pluto* Berry, 1918; *O. albatrossi* (Sasaki, 1920); *O. massyae* (Grimpe, 1920); *O. californiana* Berry, 1949; *O. japonica* Taki, 1962; *O. philipii* Oommen, 1976; *O. bruuni* Voss, 1982; *O. chathamensis* O'Shea, 1999; *O. mero* O'Shea, 1999; *O. robsoni* O'Shea, 1999; *O. calypso* Villanueva, Collins, Sanchez and Voss, 2002; *O. hardyi* Villanueva, Collins, Sanchez and Voss, 2002; and *O. borealis* Collins, 2005.

During Apr. 1995, a research cruise by the FRV Fishery Researcher No.1 (FRV Shui Shi I

Hao) (cruise FR-95-3) of the Taiwan Fisheries Research Institute, Keelung, Taiwan, was conducted to survey the benthic and mid-water faunas in the waters around the Dong-Sha Is. (= Pratas Is.; around 21°N, 116°E). Cephalopods collected during that cruise were summarized in Lu (2000) and Norman and Lu (2000). Among the rich captures of cephalopods collected during that cruise was a species of *Opisthoteuthis* which was previously referred to as *Opisthoteuthis* sp. (Lu 2000, Norman and Lu 2000). That new species is described herein.

MATERIAL AND METHOD

The material examined is housed in the National Museum of Natural Science, Taichung, Taiwan (NMNS). All specimens were fixed in 10% formalin for several days then preserved in 70% alcohol.

All measurements and color descriptions are based on preserved specimens. Mantle

*To whom correspondence and reprint requests should be addressed. Fax: 886-4-2287-4740. E-mail: cclu@dragon.nchu.edu.tw

length was recorded to the nearest millimeter. Abbreviations for measurements, indices and counts follow Roper and Voss (1983): MWI, mantle width index, the width of the mantle calculated as a percentage of mantle length (ML); PAL, pallial aperture index, the width of the pallial aperture (= mantle opening) calculated as a percentage of ML; FuLI, funnel length index, the length of the funnel calculated as a percentage of ML; FLI Out, outer fin length index, the greatest length of the posterior margin of the fin calculated as a percentage of ML; FLI In, inner fin length index, the greatest length of the anterior margin of the fin calculated as a percentage of ML; FWI, fin width index, the greatest width of a single fin as a percentage of ML; EDI, eye diameter index, the diameter of the eyeball as a percentage of ML; Lens DI, lens diameter index, the diameter of the eye lens as a percentage of ML; AL1I, arm 1 length index, the length of the arm 1 (dorsal arm) calculated as a percentage of ML; Arms 1, 2, 3, and 4: dorsal, dorso-lateral, ventro-lateral, and ventral arm, respectively; GLC, gill lamella count, the number of gill lamella on the outer demibranch minus the terminal one; WDI A, web sector A depth index, the depth of web sector A as a percentage of the longest arm; Web sectors A, B, C, D, and E, web between arms 1, arms 1 and 2, arms 2 and 3, arms 3 and 4, and arms 4, respectively; ASC1R, arm sucker count of the right arm 1; CiL1IR, cirrus length index of right arm 1, length of the longest cirrus on right arm 1 calculated as a percentage of ML; AS1I R/L proximal (or distal), arm sucker diameter index of arm 1, the diameter of the largest sucker on the proximal field (or distal field) of arm 1 calculated as a percentage of ML. R/L denotes the right arm/left arm. In tables 1 and 2, both indices for sucker aperture diameter and external sucker diameter are presented, e.g., for AS1I R/L proximal of paratype 2: 3.9/3.9 (12.6/12.9) = aperture diameter index of the largest sucker on the proximal field of right arm 1 (= 3.9)/aperture diameter index of the largest sucker on the proximal field of left arm 1 (= 3.9) (external diameter index of the largest sucker on the proximal field of right arm 1 (= 12.6)/external diameter index of the largest sucker on the proximal field of left arm 1 (= 12.9)).

Specimens of *O. persephone* and *O. pluto* in the collection of the Museum of Victoria were examined for comparison. These are listed under "Comparative materials".

Other abbreviations used include: CSIRO, Commonwealth Scientific and Industrial Research

Organisation, Australia; FRV, fishery research vessel; MOV, Museum of Victoria, Melbourne, Victoria, Australia; m, meter; stn, station; NSW, New South Wales; QLD, Queensland; SA, South Australia; TAS, Tasmania; TFDA, Tasmania Fisheries Development Authority; WA, Western Australia.

SYSTEMATICS

Family Opisthoteuthidae Verrill, 1896

Type genus: Opisthoteuthis Verrill 1883: 113.

Diagnosis: Moderate-sized cirrate with gelatinous, anterior-posteriorly compressed body, mantle, head and pedal mass bell- to disc-shaped due to fixation artefact. Fins small to long, subterminal. Shell flaring U-shaped, lateral wings tapering to fine points. Optic nerves passing through white body in 2-4 bundles. Two fields of enlarged suckers in mature males. Digestive gland entire or bilobed. Radula and posterior salivary glands absent. Web deep, single. Gills of "half-orange" form. Single genus (after Collins and Villanueva 2006 with modification).

Opisthoteuthis Verrill, 1883

Type species: Opisthoteuthis agassizii Verrill, 1883, by original designation.

Diagnosis: With characters of the family.

Opisthoteuthis dongshaensis sp. nov.

(Figs. 1-9, Tables 1, 2)

Holotype: NMNS 511-001, ♂, mature, 38 mm ML, 19°21.3'N, 113°58.6'E-19°24.9'N, 114°02.2'E, 683-693 m, 22 Apr. 1995, 16:10-17:53, *FRV Fishery Researcher No. 1*, FR-95-3, Stn. 26. (Spec. 26-1).

Paratypes: All specimens from *FRV Fishery Researcher No. 1*, FR-95-3.

Paratype 1: NMNS 5511-005, ♀, subadult, 37 mm ML, 19°38.5'N, 114°23.1'E-19°36.8'N, 114°22.9'E, 990-1015 m, 23 Apr. 1995, 16:36-17:36, 30. (30-1). Paratype 2: NMNS 5511-002, ♂, mature, 38 mm ML, 19°26.9'N, 114°03.8'E-19°26.7'N, 114°00.9'E, 650-650 m, 22 Apr. 1995, 07:53-09:23, 23. (23-2). Paratype 3: NMNS 5511-004, ♀, subadult, 28 mm ML, 19°26.8'N, 114°09.8'E-19°23.6'N, 113°59.2'E, 660-663 m, 22 Apr. 1995, 10:34-12:00, 24. (24-2). Paratype 4: NMNS 5511-003, ♂, matured, 35 mm ML, 19°24.0'N, 114°00.3'E-19°21.1'N, 113°

57.8'E, 677-680 m, 22 Apr. 1995, 13:14-14:32, 25. (25-2). Paratype 5: NMNS 5511-006, ♀, subadult, 34 mm ML, 19°26.8'N, 114°09.8'E-19°23.6'N, 113°59.2'E, 660-663 m, 22 Apr. 1995, 10:34-12:00, 24. (24-5).

Other material: NMNS 002157-00078, 2 ♀ ♀, 28-36 mm ML, 23, same station data as for paratype 2. NMNS 002157-00079, 2 ♂ ♂, 35-33 mm ML, 24, same station data as for paratypes 3 and 5. NMNS 002157-00087, ♂, 31 mm ML, 25, same station data as for paratype 4. NMNS 002157-00085, 3 ♂ ♂, 29-46 mm ML, 1 head only, ♂, (46 mm HW); 1 ♀, 35 mm ML, 26, same station data as for holotype. NMNS 002157-00084, 2 ♂ ♂, 27-30 mm ML, 19°24.9'N, 114°04.5'E-19°29.0'N, 114°07.0'E, 726-716 m, 23 Apr. 1995, 07:53-09:25, 27. NMNS 002157-00070, 2 ♂ ♂, 21-28 mm ML; 2 ♀ ♀, 14-19 mm ML, 19°30.1'N, 114°09.8'E-19°33.7'N, 114°12.7'E, 754-767 m, 23 Apr. 1995, 10:45-12:10, 28. NMNS 002157-00089, 3 ♀ ♀, 21-29 mm ML, 30, same station data as for paratype 1.

Comparative material

Opisthoteuthis persephone Berry, 1918

MOV F52347, ♂, immature, 29 mm ML, 37°52'S, 139°47'E-37°47'S, 139°42'E, 550-545 m, 31 Oct. 1984, by TFDA. MOV F164064, ♂, mature, 36 mm ML, ♀, subadult, 32 mm, WNW of Tasmania, 41°02.30'S, 143°53.06'E, 518-520 m, 27 Jan. 1985, *FRV Soela*, SO1/85, 17. Engels high-lift demersal trawl, by CSIRO. MOV F51088, ♀, mature, 37 mm ML, SW Cape Grim, Tasmania, 595 m, 01 Sept. 1983, by TFDA. MOV F51086, ♂, mature, 40 mm ML, Cape Grim, Tasmania, 550 m, 31 May 1983, by TFDA.

Opisthoteuthis pluto Berry, 1918

MOV F80330, ♀, mature, 18 mm ML, 42 km SSE of Bremer Bay, WA, 34°45.0'S, 119°32.4'E-34°45.9'S, 119°29.4'E, 550-525 m, 18 Aug. 1988, *RV Saxon Progress*, Engels high-lift demersal trawl, by CSIRO. MOV F80337, ♂, mature, 24 mm ML, 35°29.74'S, 150°50.87'E-35°26.13'S, 150°54.17'E, 960 m, 17 May 1988, *RV Soela*, SO3/88, 29. 40 km ESE of Ulladulla, NSW, Engels high-lift demersal trawl, by CSIRO. MOV F97376, ♂, mature, 38 mm ML, 35°29.74'S, 150°50.87'E-35°26.13'S, 150°54.17'E, 960 m, 17 May 1988, *RV Soela*, SO3/88, 29. 40 km ESE of Ulladulla, NSW, Engels high-lift demersal trawl,

by CSIRO. MOV F80331, ♀, mature, 53 mm ML, 47°32'S, 148°16'E-47°33'S, 148°10'E, 1100 m, 17 Mar. 1986, *RV Soela*, SO2/86, 03. Tasman Plateau, Engels high-lift demersal trawl, by CSIRO. MOV F164054, ♂, mature, 61 mm ML, 36°58.69'S, 137°25.08'E-36°58.69'S, 137°22.95'E, 990-1010 m, 24 Jan. 1988, *RV Soela*, SO1/88, 08, Engels high-lift demersal trawl, by CSIRO.

Diagnosis: Small species with moderate antero-posterior compression of cephalopodal mass (bell-shaped); mantle, head, and aboral surface of arms without areolar spots. Fins flap-like, relatively long (FLI Out 87.4-177.3 in male, 76.1-154.2 in female; FLI In 87.4-159.0 in male, 60.4-111.1 in female); mantle and nuchal constriction poorly developed; arms long, deeply invested in web; web deep; male with sucker enlargement in proximal field of all arms and distal fields of only arms III and IV, those in distal field at vicinity of web edge enormous in size; suckers on distal field of arms I and II of mature males not enlarged. Sucker number in both sexes high, ASC to 88.

Description: All measurements, indices and counts of all specimens examined are listed in tables 1 and 2.

Small-bodied species, ML to 46 mm. Mantle, head, and web extensively gelatinous; arms semi-gelatinous; cephalopodal mass moderately compressed along anteroposterior axis, bell-shaped (Figs. 1, 2). Head wider than mantle; eyes large, bulbous, oriented laterally. Areolar spots on surfaces of mantle, head, and arms absent.

Fins (Figs. 1, 2) relatively long for *Opisthoteuthis* genus (FLI Out 76.1%-172.7% of ML), peddle-shaped, moderately broad (fin width 17.5%-33.4% of outer fin length), laterally oriented, deeply invested in mantle tissues; inner and outer margins of fins weakly convex; distal margin of fin rounded; fin margins delicate; basal constriction poorly developed; muscular portion of exposed fin extending approximately 2/3 fin length.

Mantle aperture reduced, enveloping base of funnel; mantle attached to ventral arm bases at level of 6th sucker; funnel length moderate to long (46.4%-101.6% of ML), free portion about 1/2 of funnel length. Funnel organ unknown as all specimens dissected show poor fixation. Interpallial septum short, (e.g., about 3 mm in paratype 2), thin, attached to viscera adjacent to genital aperture, attached to ventral mantle at about 1/4 ventral mantle length from ventral mantle margin. Anus on raised portion of rectum, opening at base of funnel.

Table 1. Measurements, indices and counts of male specimens of *Opisthoteuthis dongshaensis* sp. nov. studied. ^adamaged condition, data may be missing or inaccurate; n.a.: not applicable

| NMNS no. | 002157-00085 | 5511-002 | 5511-001 | 002157-00079 | 5511-003 | 002157-00079 | 002157-00085 |
|-------------------------------------|--------------------------------|---|--|--|---|---|--|
| Specimen no. | 26-5 | 23-2 | 26-1 | 24-1 | 25-2 | 24-3 | 26-3 |
| Type Status | | Paratype 2 | Holotype | | Paratype 4 | | |
| Sex | M | M | M | M | M | M | M |
| TL | 214 | 214 | 221 | 208 | 197 | 204 | 204 |
| ML | 46 | 38 | 38 | 35 | 35 | 33 | 31 |
| MWI | 46.2 | 81.6 | 132.4 | 86.6 | 132.1 | 84.6 | 115.3 |
| HWI | 88.5 | 186.6 | 162.6 | 126.1 | 184.4 | 165.27 | 151.8 |
| PAI | 37.5 | 42.3 | 35.3 | 34.9 | 30.1 | 47.7 | 48.6 |
| FuLI | 62.7 | 61.9 | 71.6 | 68.5 | 70.8 | 60.3 | 71.2 |
| FLI Out | 87.4 | 140.4 | 151.8 | 172.7 | 130.1 | 167.7 | 155.0 |
| FLI In | 87.6 | 114.2 | 150.8 | 147.2 | 91.3 | 121.8 | 135.5 |
| FWI | 20.2 | 37.8 | 53.2 | 39.8 | 32.4 | 37.5 | 40.3 |
| EDI | 48.8 | 68.8 | 80.0 | ^a | 74.9 | 80.3 | 62.9 |
| Lens DI | 29.9 | 39.1 | 42.9 | 47.4 | 40.8 | 49.5 | 46.0 |
| AL1I R/L | 327.5/349.2 | 430.4/459.3 | 331.6/381.6 | 463.1/420.5 | 494.2/485.5 | 418.5/458.5 | 450.5/444.1 |
| AL2I R/L | 316.7/329.7 | 291.3/475.1 | 350.0/400.0 | 383.5/406.3 | 465.3/436.4 | 480.0/433.8 | 444.1/377.0 |
| AL3I R/L | 318.9/203.9 | 391.1/456.7 | 363.2/376.3 | 448.9/323.9 | 453.8/445.1 | 480.0/418.5 | 453.7/418.5 |
| AL4I R/L | 321.0/269.0 | 412.1/409.4 | 410.5/384.2 | 429.0/386.4 | 465.3/427.7 | 412.3/393.8 | 440.9/492.0 |
| WDI A | ^a | 56.9 | 52.3 | 69.9 | 60.2 | 69.9 | 56.5 |
| WDI B R/L | ^{a/a} | 50.3/54.1 | 47.6/44.6 | 73.6/71.8 | 55.0/57.3 | 57.7/59.6 | 49.4/50 |
| WDI C R/L | ^a /84.5 | 47.5/35.4 | 47.3/62.5 | ^a /63.2 | 50.9/54.4 | 43.6/ ^a | 49.4/44.2 |
| WDI D R/L | ^{a/a} | ^a /53.0 | 52.6/63.7 | 62.6/ ^a | 43.9/53.8 | 47.4/ ^a | 47.4/48.1 |
| WDI E | ^a | ^a | 42.8 | 47.2 | 50.9 | ^a | 57.8 |
| ASC1 R/L | 56/59 | 81/74 | 51/73 | 44/40 | 73/65 | 32/36 | 57/37 |
| ASC2 R/L | 57/24 | 43/76 | 50/70 | 36/40 | 69/73 | 37/33 | 56/40 |
| ASC3 R/L | 58/58 | 78/55 | 48/61 | 41/31 | 64/67 | 50/39 | 47/44 |
| ASC4 R/L | 64/61 | 64/72 | 70/74 | 40/29 | 61/66 | 34/39 | 43/53 |
| AS(enlarged suckers)C1 R/L proximal | 3/3 | 4/3 | 3/3 | 3/3 | 2/3 | 3/3 | 2/2 |
| AS(enlarged suckers)C1 R/L distal | 0 | 0 | 0 | 0 | 0 | 0 | 0 |
| AS(enlarged suckers)C2 R/L proximal | 3/2 | 5/4 | 2/3 | 3/3 | 2/3 | 4/4 | 2/2 |
| AS(enlarged suckers)C2 R/L distal | 0 | 0 | 0 | 0 | 0 | 0 | 0 |
| AS(enlarged suckers)C3 R/L proximal | 3/4 | 4/3 | 4/3 | 4/3 | 4/3 | 4/4 | 4/3 |
| AS(enlarged suckers)C3 R/L distal | 0 ^a /1 ^a | 4/0 ^a | 4/3 | 0 ^a /2 ^a | 0 ^a /3 | 0 ^a /0 ^a | 0 ^a /1 ^a |
| AS(enlarged suckers)C4 R/L proximal | 3/4 | 3/5 | 3/4 | 3/3 | 3/4 | 4/4 | 3/3 |
| AS(enlarged suckers)C4 R/L distal | 0 ^a /0 ^a | 5/4 | 3/0 ^a | 1 ^a /2 ^a | 1 ^a /3 | 3 ^a /0 ^a | 1 ^a /1 ^a |
| CiL1I R | ^a | 7.9 | 9.2 | 4.5 | 8.9 | 4.9 | 12.5 |
| CiL2I R | ^a | 6.0 | 11.1 | 5.4 | 8.7 | ^a | 11.2 |
| CiL3I R | ^a | 7.1 | 12.1 | 5.1 | 9.2 | ^a | 10.5 |
| CiL4I R | ^a | 8.4 | 12.6 | 7.4 | 10.1 | ^a | 7.0 |
| AS1I R/L proximal | 4.6/3.9 (10.8/10.4) | 3.9/3.9 (12.6/12.9) | 4.7/5.0 (14.5/13.4) | 4.3/4.0 (11.4/10.5) | 5.5/4.9 (11.6/11.6) | 5.5/6.2 (16.0/17.5) | 3.8/5.1 (11.5/12.8) |
| AS1I R/L distal | n.a. | n.a. | n.a. | n.a. | n.a. | n.a. | n.a. |
| AS2I R/L proximal | 5.4/4.8 (11.1/10.4) | 3.7/4.5 (13.1/13.4) | 3.9/3.9 (13.4/12.6) | 4.3/5.7 (9.4/11.6) | ^a | 5.8/5.8 (15.1/14.5) | 4.5/6.1 (15.3/15.0) |
| AS2I R/L distal | n.a. | n.a. | n.a. | n.a. | n.a. | n.a. | n.a. |
| AS3I R/L proximal | 3.7/4.1 (10.4/10.8) | 4.2/5.2 (12.6/13.6) | 6.1/4.7 (12.6/11.1) | 5.7/6.0 (11.6/15.3) | 4.6/4.9 (11.6/12.1) | 7.4/6.2 (15.7/16.6) | 7.0/5.1 (15.0/12.1) |
| AS3I R/L distal | ^a | 10.5/ ^a (29.7/ ^a) | 10.9/9.5 (27.6/31.6) | 7.7/ ^a (29.3/ ^a) | 10.1/ ^a (32.4/ ^a) | ^a | 7.3/ ^a (25.2/ ^a) |
| AS4I R/L proximal | 4.8/5.0 (10.6/9.8) | 4.2/6.0 (14.7/13.6) | 5.5/3.9 (11.1/12.1) | 5.1/6.8 (13.1/15.6) | 4.6/3.8 (11.0/12.4) | 7.1/5.8 (17.5/18.2) | 5.4/5.8 (15.7/15.7) |
| AS4I R/L distal | ^a | 13.6/10.8 (30.4/31.0) | ^a /8.9 (^a /31.6) | 6.8/6.3 (16.5/16.5) | 11.0/9.2 (30.9/30.1) | 12.0/ ^a (37.8/ ^a) | 10.9/9.9 (34.2/31.6) |
| GLC | 6 | 6 | 6 | 6 | 6 | 6 | 7 |

Table 1. (continued)

| NMNS no. | 002157-00087 | 002157-00084 | 002157-00085 | 002157-00070 | 002157-00084 | 002157-00070 | 002157-00085 |
|-------------------------------------|--------------------------------|--------------------------------|------------------------|-----------------------------|--|--|-------------------------------------|
| Specimen no. | 25-1 | 27-2 | 26-2 | 28-2 | 27-1 | 28-4 | 26-6 |
| Type Status | | | | | | | |
| Sex | M | M | M | M | M | M | M |
| TL | 226.5 | 204 | 156 | 124 | 134 | 120 | ^a |
| ML | 31 | 30 | 29 | 28 | 27 | 21 | ^a |
| MWI | 123.7 | 108.1 | 149.7 | 76.4 | 150.8 | 79.1 | ^a |
| HWI | 197.4 | 158.3 | 156.3 | 124.7 | 197.0 | 108.5 | 45.7 HW measurement |
| PAI | 49.7 | 31.9 | 51.7 | 25.8 | 57.5 | 37.0 | ^a |
| FuLI | 86.7 | 46.4 | 80.2 | 53.5 | 70.7 | 71.1 | ^a |
| FLI Out | 169.5 | 177.3 | 154.2 | 115.6 | 140.2 | 111.4 | 51.8FL Out measurement |
| FLI In | 127.6 | 159.0 | 105.2 | 101.5 | 101.1 | 91.0 | 46.5FL In measurement |
| FWI | 41.9 | 31.9 | 30.6 | 29.1 | 36.8 | 27.0 | 16.7 FW |
| EDI | 78.6 | 94.9 | 68.8 | 46.2 | 86.1 | 58.8 | 21.6 ED |
| Lens DI | 49.0 | 52.2 | 39.6 | 32.7 | 42.5 | 45.0 | 13.4 Lens D |
| AL1I R/L | 564.9/548.7 | 515.3/528.8 | 406.3/371.5 | 316.4/320.0 | 436.1/406.0 | 421.8/402.8 | 164/178 AL1 R/L |
| AL2I R/L | 551.9/545.5 | 528.8/535.6 | 375.0/347.2 | 330.9/374.5 | 391.0/462.4 | 407.6/251.2 | 162/173 AL2 R/L |
| AL3I R/L | 519.5/587.7 | 566.1/498.3 | 430.6/427.1 | 345.5/356.4 | 387.2/398.5 | 388.6/407.6 | 164/160 AL3 R/L |
| AL4I R/L | 435.1/526.0 | 535.6/498.3 | 392.4/465.3 | 334.5/323.6 | 432.3/447.4 | 440.8/431.3 | 165/160 AL4 R/L |
| WDI A | 10.8 ^a | ^a | 47.4 | 31.1 | 43.5 | ^a | ^a 96.3 WDA |
| WDI B R/L | 48.8 ^a | 65.2 ^a | 47.8/51.0 | 43.7 ^a | 49.2/53.3 | ^a / _a | ^a / _a WDB R/L |
| WDI C R/L | 47.0 ^a | 34.3/50.4 | 51.9/48.9 | ^a / _a | 44.6/47.6 | ^a / _a | ^a / _a WDC R/L |
| WDI D R/L | 26.9/52.7 | 56.1 ^a | 47.8/54.7 | 51.5/44.7 | 44.2/43.5 | ^a / _a | 53 ^a WDD R/L |
| WDI E | 29.3 | ^a | 54.1 | 33 | 26.8 | ^a | ^a WDE |
| ASC1 R/L | 73/47 | 42/41 | 67/64 | 48/51 | 44/42 | 23/27 | ^a / _a |
| ASC2 R/L | 68/77 | 36/62 | 71/51 | 57/34 | 51/41 | 35/7 | ^a / _a |
| ASC3 R/L | 57/68 | 40/56 | 70/72 | 56/31 | 55/24 | 22/14 | ^a / _a |
| ASC4 R/L | 50/62 | 57/46 | 72/66 | 49/36 | 34/32 | 8/9 | ^a / _a |
| AS(enlarged suckers)C1 R/L proximal | 3/3 | 5/5 | 2/2 | 3/3 | 2/2 | 1 ^a /3 | ^a / _a |
| AS(enlarged suckers)C1 R/L distal | 0 | 0 | 0 | 0 | 0 | 0 | ^a / _a |
| AS(enlarged suckers)C2 R/L proximal | 2 ^a /3 | 5/4 | 3/3 | 2/2 | 3/3 | 0 ^a /1 ^a | ^a / _a |
| AS(enlarged suckers)C2 R/L distal | 0 | 0 | 0 | 0 | 0 | 0 | ^a / _a |
| AS(enlarged suckers)C3 R/L proximal | 5/5 | 5/5 | 3/3 | 3/3 | 3/3 | 2 ^a /2 ^a | ^a / _a |
| AS(enlarged suckers)C3 R/L distal | 2 ^a /2 ^a | 0 ^a /0 ^a | 3/3 | 0/0 | 0 ^a /2 ^a | 0/0 | ^a / _a |
| AS(enlarged suckers)C4 R/L proximal | 3/4 | 4/4 | 3/3 | 2/3 | 4/3 | 3/3 | ^a / _a |
| AS(enlarged suckers)C4 R/L distal | 1 ^a /3 | 0 ^a /0 ^a | 3/2 | 0/0 | 0 ^a /0 ^a | 0/0 | ^a / _a |
| CiL1I R | 22.0 | 13.2 | 8.3 | 8.7 | 11.7 | ^a | ^a |
| CiL2I R | 18.8 | 13.6 | 9.7 | 6.9 | 7.9 | ^a | ^a |
| CiL3I R | 16.6 | 15.6 | 5.6 | 8.0 | 7.9 | ^a | ^a |
| CiL4I R | 14.0 | 15.9 | 8.7 | 8.7 | 10.2 | ^a | ^a |
| AS1I R/L proximal | 5.8/6.2 (14.9/17.2) | 11.8/7.8 (21.0/21.0) | 5.2/5.6 (15.3/13.5) | 4.4/3.6 (10.5/12.0) | 4.5/5.6 (12.4/12.4) | 2.8/2.4 (10.0/9.5) | 2.16/1.27 AS1 R/L (4.89/4.56) |
| AS1I R/L distal | n.a. | n.a. | n.a. | n.a. | n.a. | n.a. | n.a. |
| AS2I R/L proximal | 5.2/5.2 (16.9/14.9) | 9.5/9.8 (21.7/20.7) | 4.9/4.9 (14.6/12.8) | 5.5/5.5 (10.5/12.4) | 6.4/4.9 (12.0/10.9) | 3.3/ ^a (10.4/ ^a) | 2.05/1.95 AS2 R/L (5.41/4.59) |
| AS2I R/L distal | n.a. | n.a. | n.a. | n.a. | n.a. | n.a. | n.a. |
| AS3I R/L proximal | 5.5/5.8 (15.6/17.5) | 9.8/9.2 (18.6/20.7) | 4.5/5.6 (13.5/13.5) | 5.5/4.4 (11.6/11.6) | 5.6/5.6 (10.2/13.2) | 4.3/ ^a (10.9/ ^a) | 2.10/1.79 AS3 R/L (5.42/5.06) |
| AS3I R/L distal | 9.7/12.0 (34.1/37.7) | ^a | 9.4/9.0 (29.5/27.8) | ^a | 5.3/ ^a (27.1/ ^a) | ^a | ^a |
| AS4I R/L proximal | 5.5/5.5 (15.6/16.6) | 10.8/10.8 (23.1/20.7) | 6.9/4.9 (15.3/15.6) | 6.5/6.2 (11.3/13.8) | 4.5/4.1 (9.0/10.2) | 3.8/4.7 (10.0/10.9) | 2.26/2.25 AS4 R/L (5.90/5.78) |
| AS4I R/L distal | 10.4/9.1 (36.4/29.5) | ^a | 8.3/9.4 (34.2/31.9) | ^a | ^a | ^a | ^a |
| GLC | 6 | 6 | 6 | 6 | 6 | 7 | 7 |

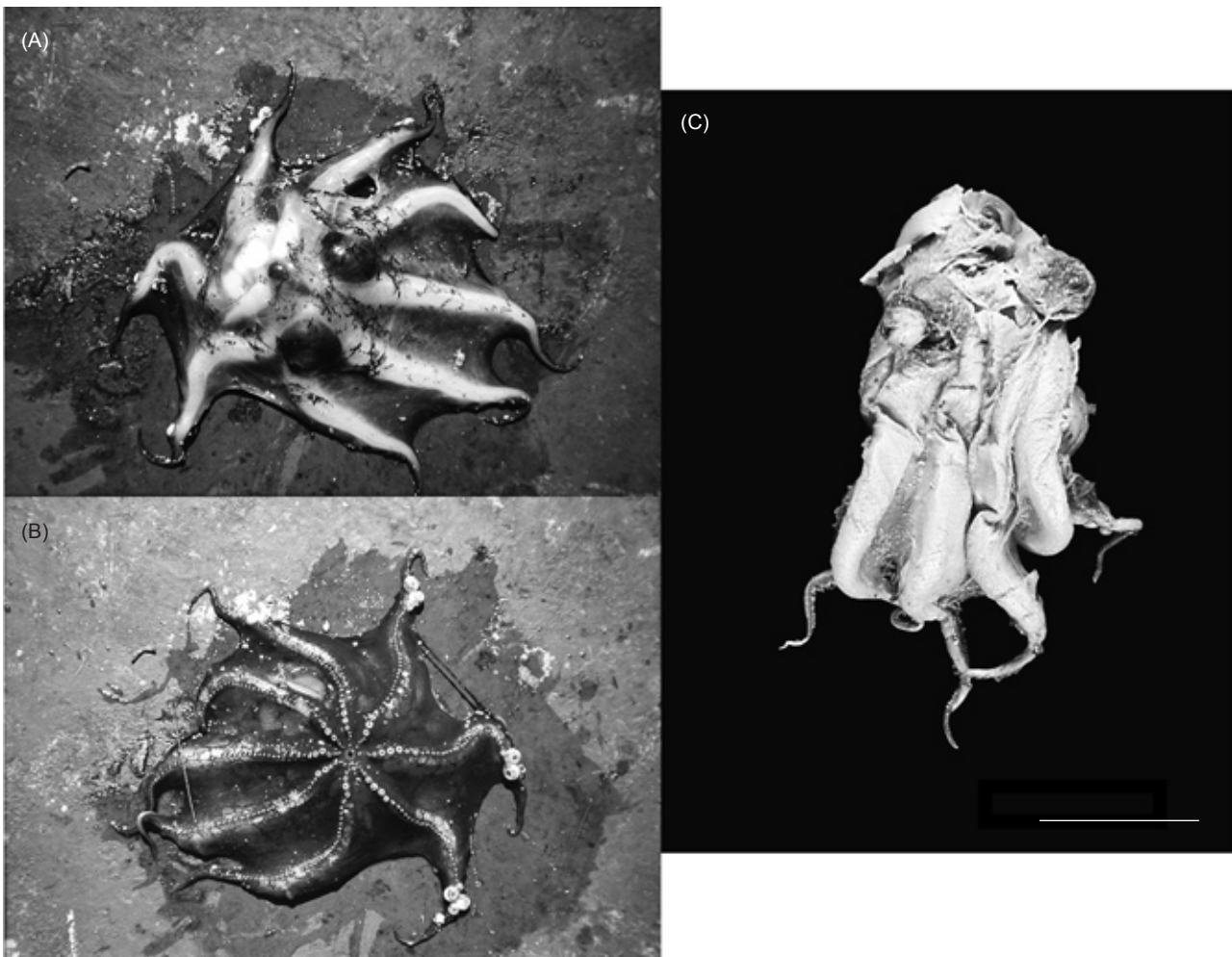


Fig. 1. *Opisthoteuthis dongshaensis* sp. nov., paratype 2, NMNS 5511-002. (A) Dorsal view of freshly caught specimen; (B) ventral view of freshly caught specimen; (C) dorsal view of preserved specimen. Scale bar = 50 mm.

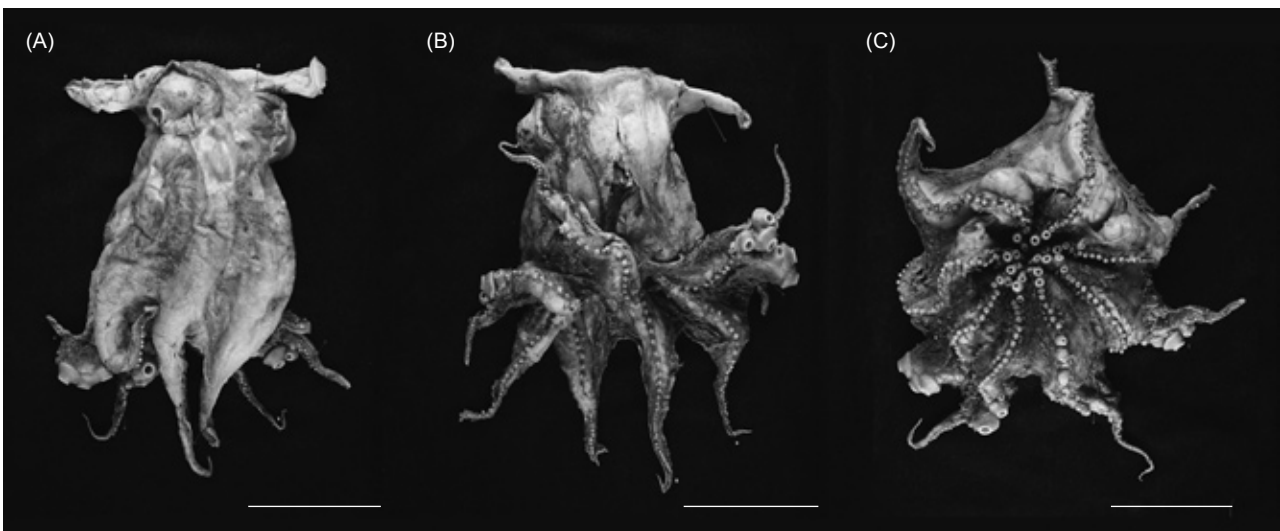


Fig. 2. *Opisthoteuthis dongshaensis* sp. nov., holotype, NMNS 5511-001. (A) Dorsal view of preserved specimen. Scale bar = 50 mm. (B) Ventral view of preserved specimen. Scale bar = 50 mm. (C) Oral view of preserved specimen. Scale bar = 50 mm.

Arm formula variable, no consistent disparity in length or apparent pattern between right and left arm pairs; arms long, thick; longest arm length 349%-541% of ML, shortest arm length 216%-436% of ML. Web formula variable, no consistent disparity in depth or apparent pattern between right and left sectors; nodules at junction of web and arm sectors absent. Web deep, thick, extensively gelatinous; deepest web sector 84.5% of longest arm length; shallowest web sector 19.9% of longest arm length. Cirrus length short to moderate, approximately 3%-13% of ML; cirri commencing between suckers 3 and 4 or between 4 and 5 on all arms, abruptly increasing in length between suckers 8 and 9 along each arm; cirri present to at least 6th distal suckers; however,

due to damaged nature of all specimens, exact morphology unknown.

Sucker size sexually dimorphic, distinctly enlarged in male (ASI aperture 3.7%-13.6% of ML, external diameter 9.4%-32.4% of ML), sucker enlargement absent in females (ASI aperture 1.6%-3.8% of ML, external diameter 3.5%-7.8% of ML) (Fig. 3). In mature males (Figs. 1B, 3A, C), abrupt sucker enlargement occurring in proximal sucker field of all arms and distal sucker field of only arms III and IV; enlarged suckers on distal field of arms I and II absent. In mature males, 1st 3 or 4 suckers of all arms of moderate size, gradually increasing in size distally, followed by 3 or 4 abruptly enlarged bulbous suckers, 2nd or 3rd sucker of which usually the largest, suckers

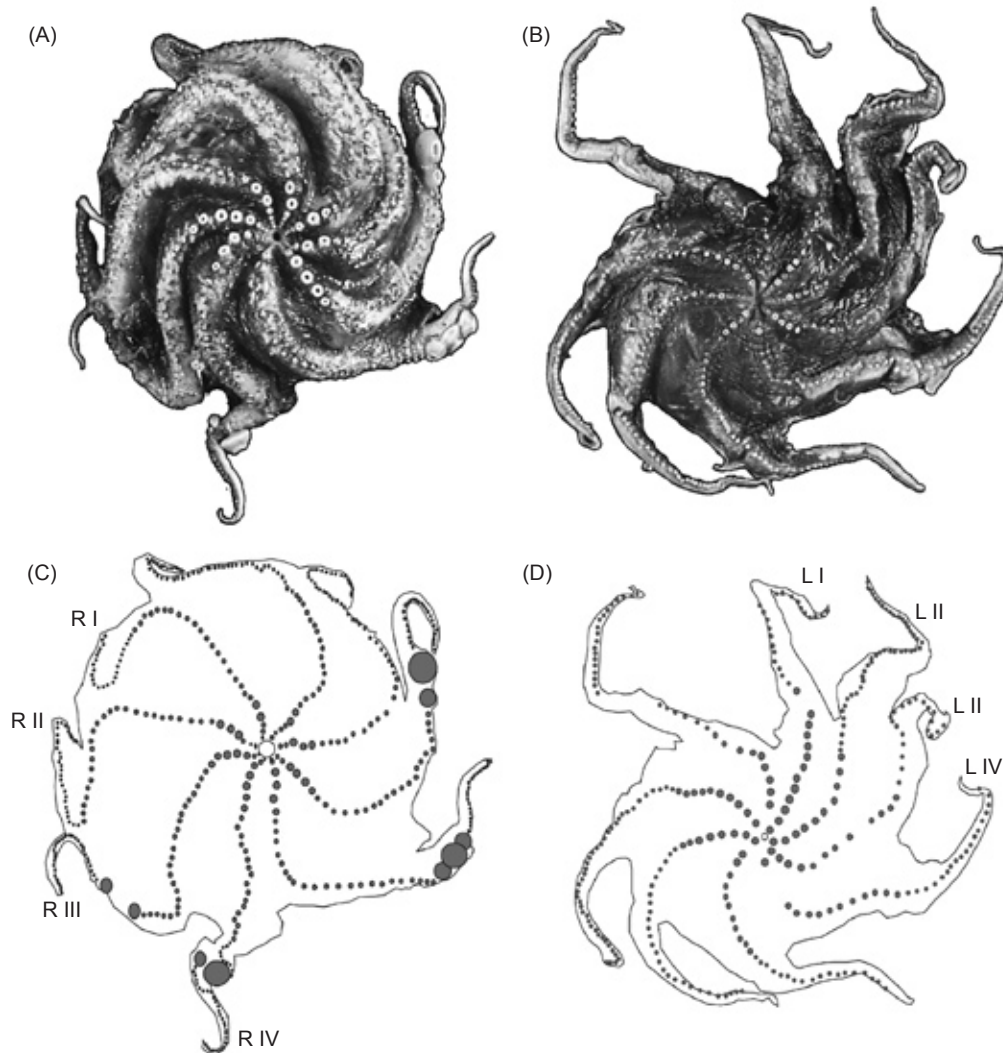


Fig. 3. *Opisthoteuthis dongshaensis* sp. nov. Photographs and drawings of oral views of arms showing sexual dimorphism of presence and absence of enlarged suckers. (A, C) NMNS 5511-003, paratype 4, male, mature, 35 mm ML; (B, D) NMNS 5511-006, paratype 5; female, subadult, 34 mm ML.

abruptly decreasing in size after field of enlarged suckers, then gradually decreasing in size to arm tip on arms I and II. On arms III and IV of mature males, from proximal to distal field of enlarged suckers, up to 25 suckers (in holotype) of reduced diameter extending to web margin, thereafter 3 or 4 greatly enlarged and somewhat flattened button-shaped suckers, followed by about 40

suckers on each arm tip abruptly decreasing in size from greatly enlarged suckers, then gradually decreasing in size distally to arm tip. In females, proximal 2 or 3 suckers on all arms slightly smaller, then subequal-sized suckers on remainder of arm to web margin, suckers on arm tip beyond web margin smaller than preceding ones and gradually decreasing in size toward arm tip (Figs. 3B, D).

Table 2. Measurements, indices, and counts of female specimens of *Opisthoteuthis dongshaensis* sp. nov. studied. ^adamaged condition, data may be missing or inaccurate; n.a.: not applicable

| NMNS no. | NMNS 5511-005 | NMNS 002157-00085 | NMNS 5511-006 | NMNS 002157-00078 | NMNS 002157-00089 | NMNS 002157-00078 |
|-------------------|------------------|-----------------------------|--------------------|----------------------|----------------------|----------------------|
| Specimen no. | 30-1 | 26-4 | 24-4 | 23-3 | 30-3 | 23-1 |
| Type Status | Paratype 1 | | Paratype 5 | | | |
| Sex | F | F | F | F | F | F |
| TL | 177 | 218 | 206 | 199 | 142 | 184 |
| ML | 37 | 35 | 34 | 31 | 29 | 28 |
| MWI | 118.5 | 83.5 | 77.3 | 122.6 | 84.8 | 141.2 |
| HWI | 198.1 | 100.6 | 151.2 | 173.1 | 148.1 | 189.1 |
| PAI | 62.4 | 41.2 | 29.4 | 42.6 | 39.1 | 26.8 |
| FunLI | 64.0 | 53.7 | 61.9 | 101.6 | 75.8 | 63.4 |
| FLI Out | 117.7 | 101.4 | 90.1 | 129.5 | 76.1 | 132.4 |
| FLI In | 81.2 | 92.6 | 75.9 | 106.9 | 65.7 | 78.2 |
| FWI | 23.7 | 21.9 | 28.8 | 43.3 | 24.6 | 34.5 |
| EDI | 74.7 | 59.9 | 66.6 | 71.8 | 64.4 | 71.5 |
| Lens DI | 37.9 | 34.7 | 37.2 | 42.3 | 32.9 | 41.2 |
| AL1R/L | 403.3/406.0 | 215.9/448.9 | 398.3/415.7 | 495.1/485.2 | 328.7/349.5 | 468.3/450.7 |
| AL2IR/L | 392.4/452.3 | 485.8/392.0 | 412.8/386.6 | 521.3/541.0 | 249.1/335.6 | 514.1/447.2 |
| AL3IR/L | 397.8/419.6 | 375.0/304.0 | 343.0/366.3 | 482.0/531.1 | 256.1/318.3 | 440.1/426.1 |
| AL4IR/L | 408.7/468.7 | 403.4/434.7 | 337.2/354.7 | 472.1/436.1 | 273.3/276.8 | 454.2/436.6 |
| WDI A | 44.2 | 27.0 | 43.4 | 49.1 | 64.4 | 49.3 |
| WDI B R/L | 35.5/48.8 | ^a / _a | 32.9/44.8 | 50.9/45.5 | 41.6/57.4 | 56.2/46.6 |
| WDI C R/L | 41.9/41.9 | ^a / _a | 48.3/ ^a | 47.3/55.8 | 38.6/52.5 | 64.4/51.4 |
| WDI D R/L | 40.1/32.6 | ^a / _a | 42.7/ ^a | 43.0/61.2 | 40.6/45.5 | 46.6/42.5 |
| WDI E | 33.1 | a | a | 44.8 | a | 45.2 |
| ASC1R/L | 78/77 | 21/65 | 35/30 | 65/76 | 64/61 | 65/64 |
| ASC2R/L | 79/77 | 61/48 | 51/33 | 69/72 | 47/60 | 71/69 |
| ASC3R/L | 76/83 | 47/35 | 39/67 | 69/70 | 54/54 | 58/62 |
| ASC4R/L | 85/88 | 55/60 | 30/37 | 64/65 | 51/51 | 63/68 |
| CI1R | 5.7 | 8.8 | 2.9 | 7.9 | 11.4 | a |
| CI2R | 8.4 | 6.8 | 4.4 | 6.6 | 3.8 | 4.6 |
| CI3R | 7.1 | a | a | 7.9 | 8.3 | 5.3 |
| CI4R | 6.0 | a | 4.4 | 5.6 | 10.0 | a |
| AS1I R/L proximal | 2.7/3.3(6.3/6.3) | 2.0/3.1(5.7/5.7) | 3.8/3.5(7.0/7.6) | 3.6/3.3(6.9/6.6) | 1.7/2.1(3.5/4.2) | 3.9/3.2(4.9/5.6) |
| AS1I R/L distal | n.a. | n.a. | n.a. | n.a. | n.a. | n.a. |
| AS2I R/L proximal | 3.0/2.7(5.7/6.3) | 3.1/2.6(5.7/5.1) | 2.9/2.9(6.7/6.7) | 3.3/2.3(6.6/6.6) | 2.1/1.7(4.5/4.9) | 2.1/3.2(4.6/5.6) |
| AS2I R/L distal | n.a. | n.a. | n.a. | n.a. | n.a. | n.a. |
| AS3I R/L proximal | 2.7/2.7(5.7/6.0) | 3.1/3.4(6.3/5.4) | 2.9/3.5(7.0/7.8) | 3.0/1.6(6.6/6.2) | 2.8/2.1(5.2/4.8) | 2.1/2.1(5.3/4.6) |
| AS3I R/L distal | n.a. | n.a. | n.a. | n.a. | n.a. | n.a. |
| AS4I R/L proximal | 2.7/3.0(5.4/7.1) | 3.1/3.1(5.4/5.4) | 2.0/2.9(6.4/7.6) | 3.0/3.0(7.2/7.5) | 1.7/2.4(4.5/5.2) | 1.8/2.1(5.3/6.3) |
| AS4I R/L distal | n.a. | n.a. | n.a. | n.a. | n.a. | n.a. |
| GLC | 7 | 7 | 6 | 7 | 6 | 7 |

Suckers with a moderate-sized suction chamber, well-developed muscular suction pad and wall ring, and small, simple aperture. Mature or nearly mature specimen arm sucker counts high in both sexes, slightly higher in female (up to 81 in males, up to 88 in females). Normal suckers recessed into oral surface of arms, closely spaced within web sectors, packed at web margin; suckers extending to arm tips.

Gills half-orange-type, with 6 or 7 tightly compacted lamellae; innermost and outermost ones reduced in size, lamellae 3 and 4 with common arterial base.

Shell simple U-shaped, solid (non-vacuolated), amber-colored in preserved specimens, easily fragmented, surface smooth (Figs. 4, 5). Saddle well developed, thickened relative to wings, with single shallow outer groove,

Table 2. (continued)

| NMNS No. | NMNS 5511-004 | NMNS 002157-00089 | NMNS 002157-00089 | NMNS 002157-00070 | NMNS 002157-00070 |
|-------------------|------------------|----------------------|----------------------|-----------------------------|----------------------|
| Specimen no | 24-2 | 30-2 | 30-4 | 28-1 | 28-3 |
| Type Status | Paratype 3 | | | | |
| Sex | F | F | F | F | F |
| TL | 177 | 97 | 98 | 123 | 86 |
| ML | 28 | 25 | 21 | 19 | 14 |
| MWI | 110.3 | 79.7 | 96.7 | 98.9 | 138.9 |
| HWI | 171.2 | 139.0 | 150.5 | 145.3 | 159.0 |
| PAI | 44.8 | 35.5 | 42.0 | 33.7 | 58.3 |
| FunLI | 72.2 | 50.6 | 45.3 | 78.9 | 104.2 |
| FLI Out | 114.9 | 89.2 | 92.9 | 150.0 | 154.2 |
| FLI In | 82.8 | 65.3 | 60.4 | 126.8 | 111.1 |
| FWI | 25.3 | 19.9 | 26.4 | 26.3 | 27.1 |
| EDI | 69.0 | 65.3 | 67.9 | 90.0 | 90.2 |
| Lens DI | 42.0 | 31.9 | 42.0 | 78.9 | 58.3 |
| AL1R/L | 462.6/416.4 | 274.9/346.6 | 358.5/353.8 | 410.5/426.3 | 368.1/472.2 |
| AL2R/L | 416.4/412.8 | 310.8/326.7 | 358.5/344.3 | 426.3/436.8 | 326.3/458.3 |
| AL3R/L | 405.7/419.9 | 330.7/255.0 | 325.5/320.8 | 384.2/442.1 | 354.2/444.4 |
| AL4R/L | 402.1/398.6 | 330.7/270.9 | 297.2/311.3 | 400.0/394.7 | 437.5/395.8 |
| WDI A | 55.4 | 52.9 | 52.6 | ^a | 19.9 |
| WDI B R/L | 56.9/54.6 | 36.8/55.2 | 44.7/47.4 | 45.2/ ^a | 48.8/51.6 |
| WDI C R/L | 57.7/53.1 | 49.4/44.8 | 52.6/ ^a | 56.0/61.9 | 37.8/45.3 |
| WDI D R/L | 44.6/44.6 | 44.8/52.9 | 48.7/47.4 | ^a / ^a | 37.2/51.5 |
| WDI E | 48.5 | 48.3 | 43.4 | 50.0 | 24.6 |
| ASC1R/L | 69/70 | 50/57 | 54/59 | 39/26 | 19/28 |
| ASC2R/L | 65/71 | 43/61 | 62/49 | 48/42 | 44/31 |
| ASC3R/L | 67/71 | 52/58 | 58/32 | 32/42 | 29/35 |
| ASC4R/L | 67/65 | 54/52 | 47/60 | 47/35 | 29/36 |
| CiL1IR | 3.6 | 5.6 | 9.4 | 6.8 | 9.0 |
| CiL2IR | 6.8 | 6.8 | 11.8 | ^a | 10.4 |
| CiL3IR | 8.9 | 4.8 | 8.5 | 3.7 | ^a |
| CiL4IR | 10.0 | 4.8 | 4.7 | 13.7 | ^a |
| AS11 R/L proximal | 3.9/3.9(6.4/6.0) | 2.4/2.8(4.8/5.2) | 1.9/2.4(4.2/5.2) | 3.7/3.7(8.4/8.9) | 3.5/3.5(10.4/9.0) |
| AS11 R/L distal | n.a. | n.a. | n.a. | n.a. | n.a. |
| AS21 R/L proximal | 3.9/3.6(6.8/6.8) | 2.0/2.4(5.2/4.8) | 2.4/1.4(5.2/4.7) | 2.6/6.3(6.8/11.1) | 4.2/4.8(8.3/9.7) |
| AS21 R/L distal | n.a. | n.a. | n.a. | n.a. | n.a. |
| AS31 R/L proximal | 2.8/3.9(7.1/7.1) | 2.8/2.4(5.2/4.8) | 1.9/2.4(5.2/5.7) | 3.7/5.3(10.0/11.6) | 4.2/3.5(10.4/11.1) |
| AS31 R/L distal | n.a. | n.a. | n.a. | n.a. | n.a. |
| AS41 R/L proximal | 4.3/3.6(7.5/6.8) | 2.4/2.4(5.2/4.4) | 1.9/1.4(4.7/4.7) | 2.6/3.7(6.3/10.0) | 4.9/4.2(10.4/9.7) |
| AS41 R/L distal | n.a. | n.a. | n.a. | n.a. | n.a. |
| GLC | 7 | 6 | 6 | 7 | 6 |

and convex inner margins; lateral wings long, tapering to acute points. Lateral wings (Figs. 4D, 5D) well developed, laminar, without inrolled margins, wings continuing from saddle without divergence; muscle insertion points marked

by 2 small prominences. No obvious sexual dimorphism in shape of shell.

In fresh specimens, oral surface of arms and web vermilion-colored; suckers, sucker apertures paler, cream-colored; dorsal surface of mantle,

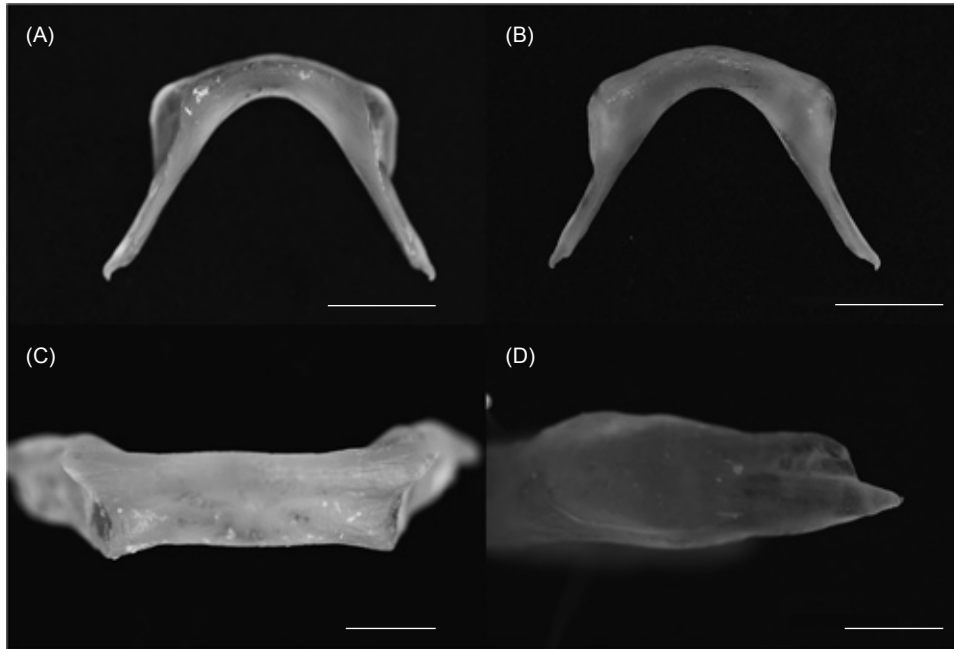


Fig. 4. *Opisthoteuthis dongshaensis* sp. nov., shell of spec. 25-1, male, NMNS 002157-00087. (A) Dorsal view. Scale bar = 10 mm. (B) Ventral view. Scale bar = 10 mm. (C) Posterior view. Scale bar = 5 mm. (D) Lateral view of left limb. Scale bar = 5 mm.

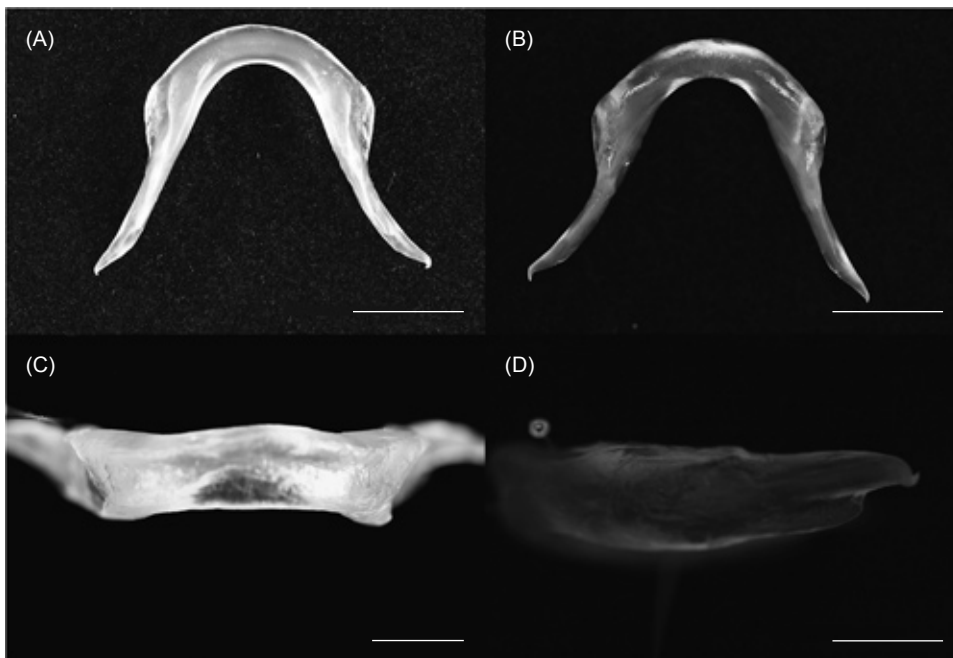


Fig. 5. *Opisthoteuthis dongshaensis* sp. nov., shell of spec. 26-4, female, NMNS 002157-00085. (A) Dorsal view. Scale bar = 10 mm. (B) Ventral view. Scale bar = 10 mm. (C) Posterior view. Scale bar = 5 mm. (D) Lateral view of left limb. Scale bar = 5 mm.

head, and arms, reddish-purple; ventral surface of mantle, dorsal surface of fins, orbit, web margin, and portion of arm free from web, paler, cream-colored. Skin delicate, most specimens having lost most of their skin. In preserved specimens, pigmented skin having turned maroon-colored.

Optic lobe large, kidney-shaped (Figs. 6C, D). Optic nerve branching into 4 large nerve bundles, each undergoing minor branching into rear of eyeball. White bodies disc-shaped, dark brown.

Digestive system (Figs. 6A, B) with moderate-sized buccal bulb; anterior salivary glands, radular and palatine teeth absent; crop diverticulum absent, crop poorly developed. Stomach without external demarcation. Cecum poorly developed, spiral coiling absent. Intestine shorter than esophagus, thin-walled, distended in 2 parts, proximally and distally with weak central constriction; anal flaps absent. Digestive gland

large, bilobed; pancreas well developed.

Upper beak (Figs. 7A, B) tall, height 70% of beak length (= crest length), darkly pigmented; margins of hood and lateral wall translucent; hood moderately deep, 68% of beak length; jaw without teeth; rostrum strongly deflected down, acutely angled, with sharp point. Lateral walls parallel-sided, with slightly rounded crest and strong lateral wall fold. Lower beak (Figs. 7C, D) tall, height 86% of base length, darkly pigmented; lateral wing, hood, and wall margins translucent. Weak notch at jaw angle, crest broad, convex. Hood long, 65% of beak length, projecting forward, without notch at posterior margin; rostrum slightly rounded; wings moderately long, length 60% of beak length. Lateral wall long, length 110% of beak length, posterior margin of crest without notch.

Male reproductive system (Figs. 8A, B) with great development of seminal vesicles and

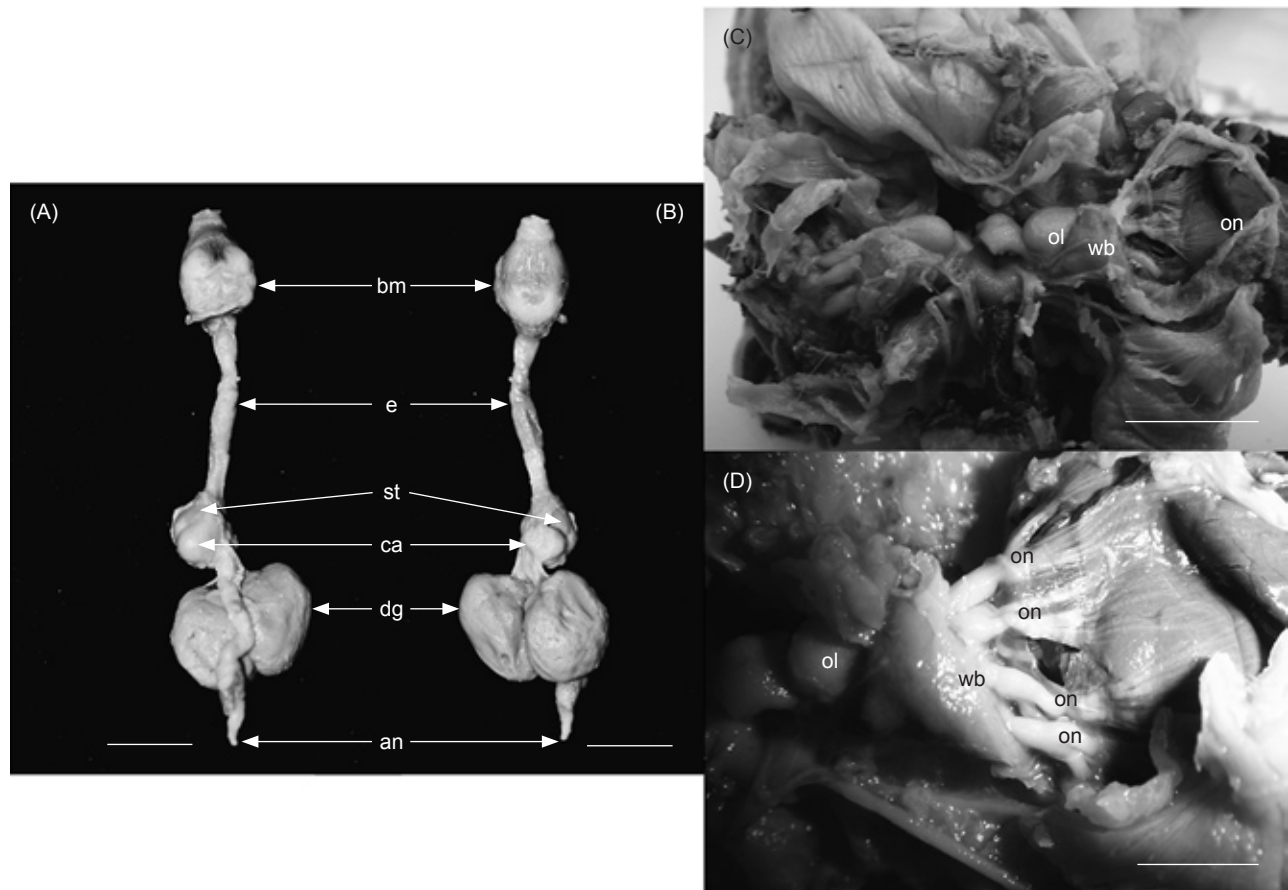


Fig. 6. *Opisthoteuthis dongshaensis* sp. nov. (A, B) Digestive Tract. an, anus; bm, buccal mass; ca, cecum; dg, digestive gland; e, esophagus; ol, optic lobe; on, optic nerve; st, stomach; wb, white body. (A) Dorsal view of digestive tract of spec. 24-1, NMNS 002157-00079. Scale bar = 10 mm. (B) Ventral view of digestive tract of spec. 24-1, NMNS 002157-00079. Scale bar: 10 mm. (C, D) Optic Lobe. (C) Optic lobe, white body, optic nerve bundles, eye of spec. 26-6, NMNS 002157-00085. Scale bar = 10mm. (D) Close-up view of right optic lobe, white body, optic nerve bundles and eye of spec. 26-6, NMNS 002157-00085. Scale bar = 5 mm.

accessory glands; complex of accessory gland structures larger than seminal vesicle complex; terminal organ well developed. Spermatophore not described as no spermatophore was found.

Female reproductive system (Fig. 9) with single oviduct and large ovary sac; proximal oviduct long, containing few (to 4) oocytes in dissected female. Oviducal gland 2-chambered; distal chamber light grayish-brown, striated, about 1.35 times size of proximal chamber; proximal chamber white, with weak striations. Distal oviduct short, containing a single oval egg in dissected female, 8 mm long, 5 mm wide, egg shell light honey-colored, with longitudinal striations. Some oocytes in proximal oviduct similar to eggs in distal oviduct, majority of remaining oocytes smaller, smooth. Ovary with numerous oocytes of various developmental stages (paratype 5 contains 163 free oocytes plus numerous undeveloped oocytes in bunches).

Distribution: Known only from the South China Sea in the vicinity of the Dong Sha Is. (the Pratas Islands, around 21°N, 116°E) at depths of

660-1015 m.

Etymology: The specific epithet is derived from the Chinese name of the islands, Dong Sha Is., the source of all known specimens of this new species.

DISCUSSION

O'Shea (1999) in describing several new species from New Zealand reviewed the family and divided it into 3 groups. The diagnostic characters of group 1, typified by *O. agassizii*, are: cirri commencing between suckers 1 and 2; male sucker enlargement greatest in proximal field, weak in distal field; shell non-vacuolated; muscle insertion points marked by 2 well-developed prominences, lateral wings laminar, with terminal prolongation into fine-pointed tips; digestive gland bilobed; male accessory gland 3 dominating accessory gland complex, terminal organ poorly developed. Diagnostic characters of group 2 are: cirri commencing between suckers 2-4; male with

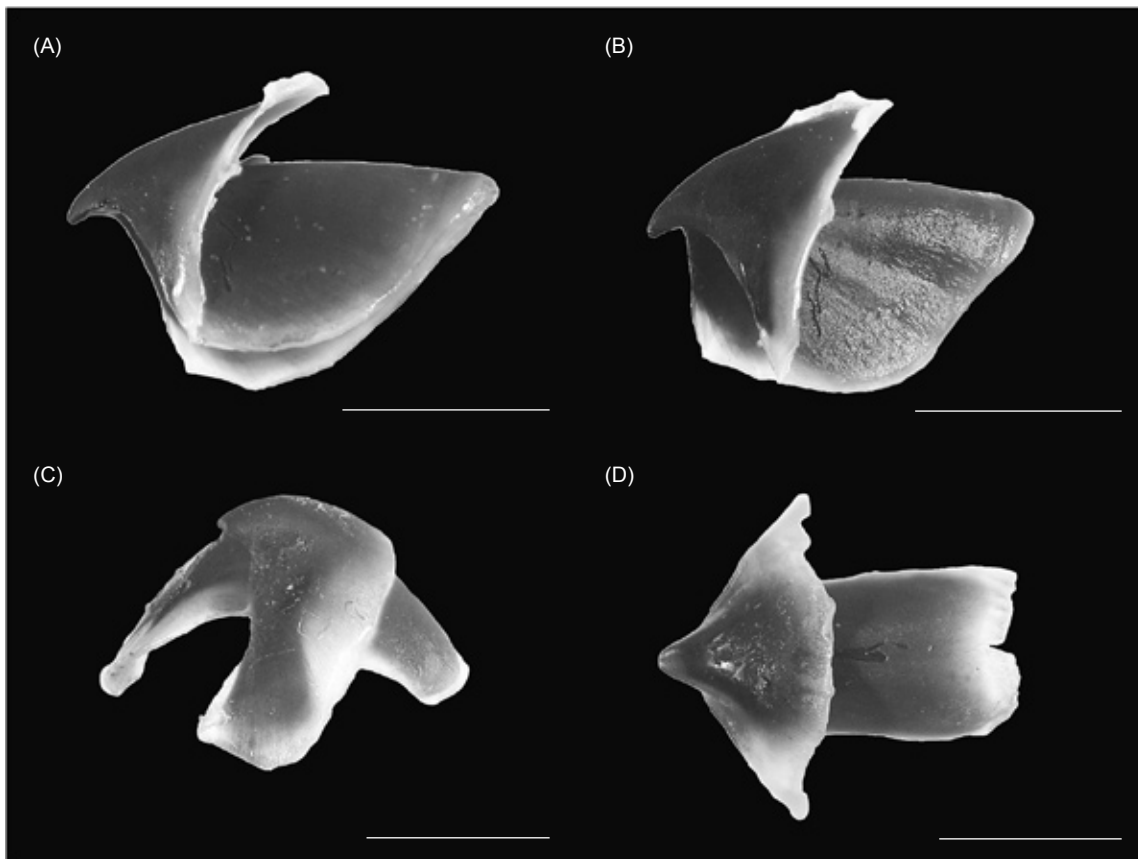


Fig. 7. *Opisthoteuthis dongshaensis* sp. nov., beak of paratype 2, NMNS 5511-002. (A, B) Upper beak. Scale bar = 5 mm. (C, D) Lower beak. Scale bar = 5 mm.

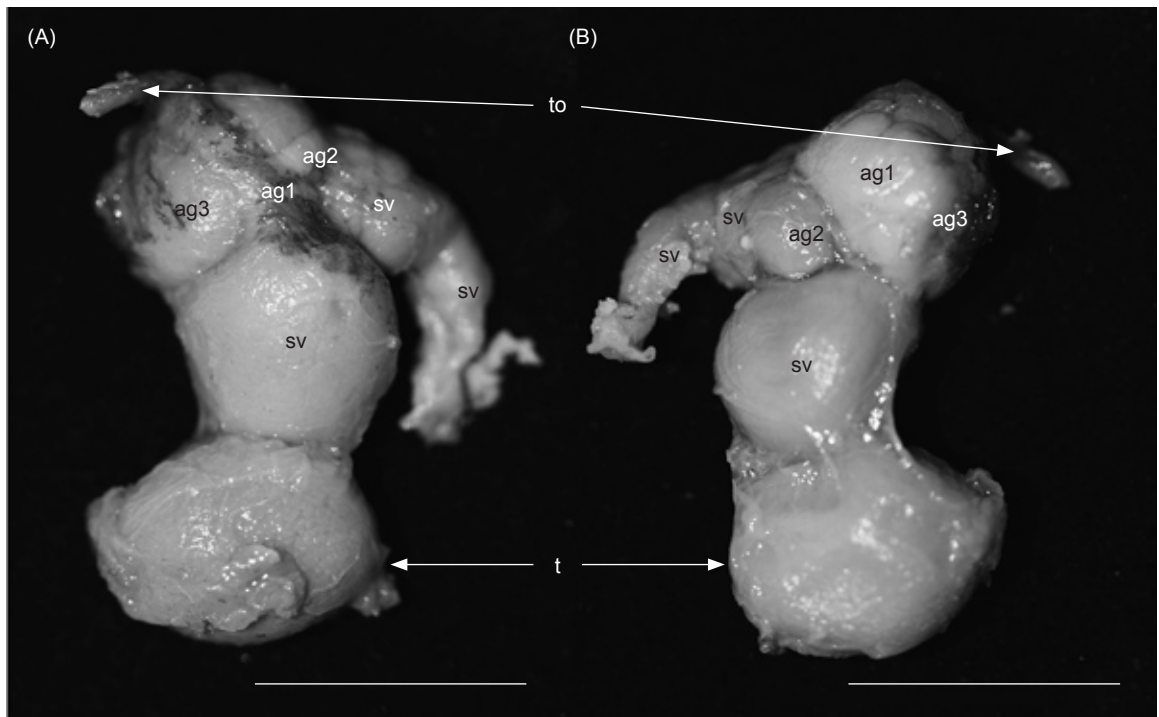


Fig. 8. *Opisthoteuthis dongshaensis* sp. nov., male reproductive system of spec. 25-2, paratype 4, NMNS 5511-003. ag1-3, accessory glands 1-3, respectively; to, terminal organ; sv, seminal vesicle; t, testes. (A) Outer view. Scale bar = 5 mm. (B) Inner view. Scale bar = 5 mm.

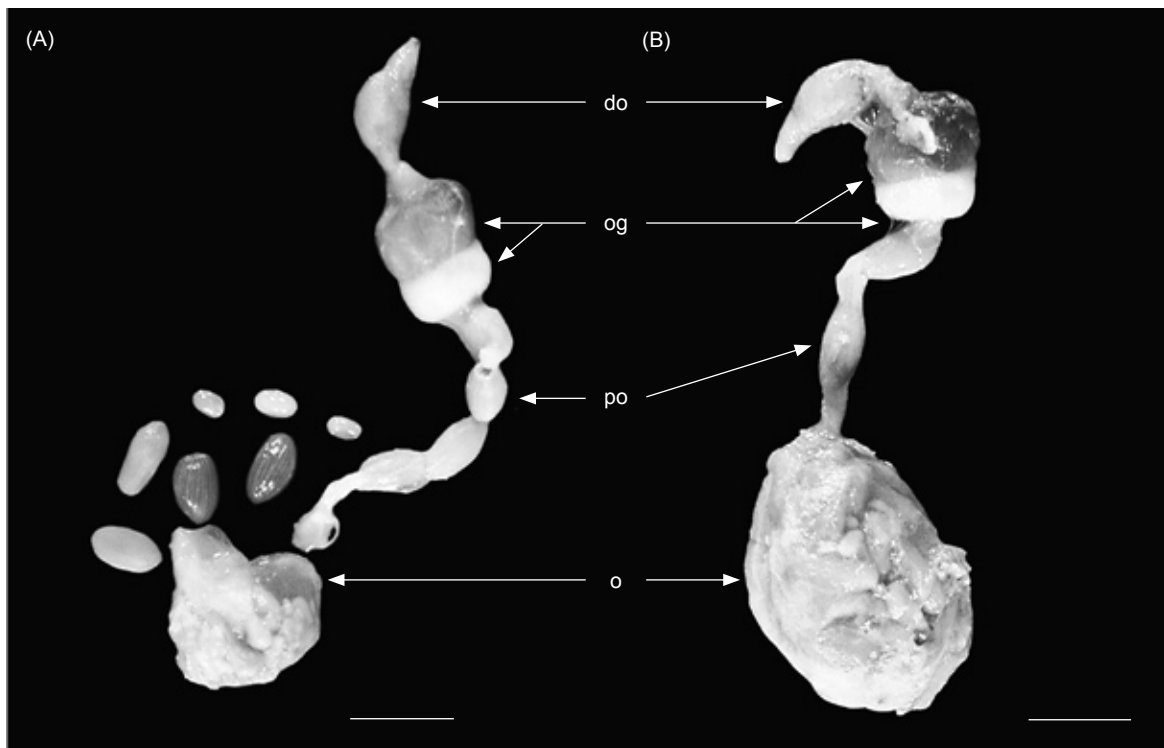


Fig. 9. *Opisthoteuthis dongshaensis* sp. nov., female reproductive system. do, distal oviduct; o, ovary; og, oviducal gland; po, proximal oviduct. (A) Female reproductive system, with ovarian sac ruptured, of paratype 5, NMNS 5511-006. Scale bar = 10 mm. (B) Female reproductive system, intact, of spec. 23-3, NMNS 002157-00078. Scale bar = 10 mm.

Table 3. Comparison of *Opisthoteuthis* species (following Villanueva et al. 2002 and Villanueva et al. 2008 with information on *O. persephone*, *O. pluto*, and *O. dongshaensis* sp. nov. added). ^aFrom illustration. ^bDESD distal field enlarged sucker diameter; PESD proximal field enlarged sucker diameter. For the purposes of this table, a distal field was considered to be absent if suckers there did not show a distinct enlargement

| Mature males | | | | | | |
|------------------------|-------------------|-----------------------------|------------------------------|----------------------|-----------------------|---|
| Species | Arm I more robust | Prox. field: No. of suckers | Distal field: No. of suckers | Prox. field: Arm no. | Distal field: Arm no. | Distal field: Largest sucker, mean position |
| <i>O. agassizii</i> | No | 5 | 7 or 8 | I - IV | I - IV | 34 - 36 |
| <i>O. albatrossi</i> | No | 0 | 3 | None | I | ? |
| <i>O. borealis</i> | Slight | 5 | 9 - 14 | I - IV | I - IV | 27 - 30 |
| <i>O. bruuni</i> | No | 3 | 2 or 3 | I - IV | I - IV | 24 - 27 ^a |
| <i>O. californiana</i> | No | 8 - 10 | 3 - 8 | I - IV | I | ~ 27 |
| <i>O. calypso</i> | No | 2 - 6 | 2 - 3 | III | I - IV | 26 or 27 |
| <i>O. chathamensis</i> | No | 5 - 7 | 6 - 8 | I - IV | I - IV | ~ 22 |
| <i>O. depressa</i> | No | 16 | 0 | I - IV | None | - |
| <i>O. extensa</i> | ? | ? | ? | ? | ? | ? |
| <i>O. grimaldii</i> | No | 4 - 11 | 9 - 10 | I - IV | I - IV | 29 - 31 |
| <i>O. hardyi</i> | Slight | 4 - 9 | 9 - 14 | I - IV | I - IV | 22 - 24 |
| <i>O. japonica</i> | No | 9 | ? | I - IV | ? | - |
| <i>O. massyae</i> | Yes | 7 - 8 | 9 - 11 | I - IV | II - IV | 40 - 41 |
| <i>O. medusoides</i> | ? | ? | ? | ? | IV | ? |
| <i>O. mero</i> | No | 5 - 8 | ? | I - IV | None | - |
| <i>O. persephone</i> | No | 3 - 8 | 4 - 7 | I - IV | I and II | 31 - 34 |
| <i>O. philipii</i> | ? | 5 - 11 | ? | ? | ? | ? |
| <i>O. pluto</i> | Yes | 3 - 6 | 2 - 4 | I - IV | II - IV | 29 - 34 |
| <i>O. robsoni</i> | No | 7 - 8 | ? | I - IV | None | - |
| <i>O. dongshaensis</i> | No | 3 - 4 | 3 - 4 | I - IV | III and IV | 33 - 42 |

| Both sexes | | | | | | |
|------------------------|------------------------------|-------------------|--------------|--------------|-----------------------|--|
| Species | DESD> PESD ^b | Arm sucker Counts | Funnel organ | Web supports | Digest. Gland bilobed | Geographical region |
| <i>O. agassizii</i> | No, except in older males | 58 - 80 | V-shaped | Multiple | No | NW Atlantic |
| <i>O. albatrossi</i> | Yes | 80 | ? | Single? | Yes | N Pacific |
| <i>O. borealis</i> | Equal | 75 - 82 | ? | No | No | N Atlantic |
| <i>O. bruuni</i> | No | ? | 2 pads | ? | ? | SE Pacific |
| <i>O. californiana</i> | Yes | ? | 2 pads | ? | ? | N Pacific |
| <i>O. calypso</i> | Yes | 47 - 58 | 2 pads | Single | No | E Atlantic |
| <i>O. chathamensis</i> | Equal? | 41 - 55 | V-shaped | ? | Yes | SW Pacific |
| <i>O. depressa</i> | No | 50 | ? | Absent? | ? | NW Pacific |
| <i>O. extensa</i> | ? | ? | ? | ? | ? | E Indian |
| <i>O. grimaldii</i> | No | 73 - 80 | 2 pads | Single | Yes | E Atlantic |
| <i>O. hardyi</i> | Equal | 60 - 67 | ? | Absent | No | high S Atlantic |
| <i>O. japonica</i> | No | ? | 2 pads | ? | ? | NW Pacific |
| <i>O. massyae</i> | No | 81 - 106 | 2 pads | Multiple | Yes | E Atlantic |
| <i>O. medusoides</i> | ? | ? | ? | ? | ? | W Indian |
| <i>O. mero</i> | No | 54 - 71 | V-shaped | ? | Yes | SW Pacific |
| <i>O. persephone</i> | No | 68 - 81 | V-shaped | Absent | Yes | Off S. Aust. From NSW to SA, including TAS |
| <i>O. philipii</i> | ? | ? | V-shaped | Single | ? | NW Indian |
| <i>O. pluto</i> | Yes in male/ No in female | 59 - 88 | V-shaped | Absent | Yes | Off S. Aust. From QLD to WA, including TAS |
| <i>O. robsoni</i> | No | 74 - 89 | V-shaped | ? | No | SW Pacific |
| <i>O. dongshaensis</i> | Yes | 74 - 88 | V-shaped | Absent | Yes | NW Pacific (South China Sea) |

gross sucker enlargement in both proximal and distal fields; shell solid, muscle insertion points marked by 2 small prominences; lateral wings laminar, tapering to acute points; digestive gland bilobed; accessory gland 1 dominating accessory gland complex; terminal organ well developed. Diagnostic characters of group 3 are: cirri commencing between suckers 2 and 4; males with grossly enlarged suckers in proximal field, weakly enlarged suckers in distal field; shell vacuolated (not solid); muscle insertion points marked by 2 well-developed prominences, lateral wings laminar, tapering to acute points; digestive gland entire (not bilobed); accessory glands 2 and 3 dominating gland complex, terminal organ well developed.

Sucker enlargement in males of the present species places it in group 2 of O'Shea (1999), which includes *O. pluto*, *O. californiana*, *O. chathamensis* and possibly *O. medusoides*. The present species differs from all described species of *Opisthoteuthis* in having enlarged suckers of the distal field in mature males only on arms III and IV. Villanueva et al. (2002) in reviewing the genus, presented a table comparing various characters of the genus. This table, with minor modifications, is reproduced as table 3 with the addition of data for *O. persephone*, *O. pluto*, and the present species.

Of the 19 nominal species recognized by Collins and Villanueva (2006), only *O. depressa*, *O. albatrossi*, and *O. japonica* were reported from the Northwest Pacific, i.e., *O. depressa* from Japan (Ijima and Ikeda 1895, Sasaki 1929), East China Sea and South China Sea (Dong 1988); *O. albatrossi* from Japan (Sasaki 1920 1929), and *O. japonica* from Japan (Taki 1962 1963) and Taiwan (Lu unpubl. data). The record of *O. depressa* from the continental slope of the South China Sea reported by Dong (1988) and represented by a female specimen may represent the present species. With the addition of the present species, 4 species of *Opisthoteuthis* have now been reported from the Northwest Pacific Ocean.

Acknowledgments: I wish to thank Prof. I.C. Liao, former Director of the Taiwan Fisheries Research Institute for permission to attend the cruise, the skipper and crew of the *FRV Shui Shi I Hao*, and the scientific crew on board for their assistance during the cruise. Dr. P.H. Ho of the Institute of Marine Biology, National Ocean Univ., Keelung, Taiwan provided the photographs of the fresh animal and Mr. W.S. Chung of the Department of Life Sciences, National Chung Hsing Univ. (now of the Univ. of Queensland, Australia) took

many of the preserved animal photographs, and I am indebted to both of them. I also wish to thank Mr. K.H. Lee, Collection Manager of the Invertebrate Section of the National Museum of Natural Sciences, Taichung, Taiwan who patiently answered many queries and allowed access to the collection. Dr. R. Villanueva of the Institut de Ciències del Mar, CSIC, Barcelona, Spain and 2 anonymous referees reviewed the manuscript and provided constructive suggestions for which I am grateful. The support through various grants from the National Science Council of Taiwan which enabled me to participate in the cruise and investigate the cephalopod fauna of Taiwanese and adjacent waters is gratefully acknowledged.

REFERENCES

- Berry SS. 1918. Report on the Cephalopoda obtained by the F.I.S. "Endeavour" in the Great Australia Bight and other southern Australia localities. Biological Results of the Fishing Experiments Carried out by the F.I.S. "Endeavour", 1909-14, **4**: 201-298.
- Berry SS. 1949. A new *Opisthoteuthis* from the eastern Pacific. Leaflets Malacol. **1**: 23-26.
- Collins MA. 2005. *Opisthoteuthis borealis*: a new species of cirrate octopod from Greenland waters. J. Mar. Biol. Assoc. UK **84**: 415-419.
- Collins MA, R Villanueva. 2006. Taxonomy, ecology and behaviour of the cirrate octopods. Oceanogr. Mar. Biol. Ann. Rev. **44**: 277-322.
- Dong Z. 1988. Fauna Sinica. Phylum Mollusca. Class Cephalopoda. Beijing: Science Press.
- Grimpe G. 1920. Teuthologische Mitteilungen V. Zwei neue Cirraten-Arte. Zool. Anz. **46**: 349-359.
- Ijima I, S Ikeda. 1895. Description of *Opisthoteuthis depressa* n. sp. J. Sci. Coll. Imp. Univ. Tokyo **8**: 323-337.
- Joubin L. 1903. Sur quelques céphalopodes recueillis pendant les dernières campagnes de S.A.S. le Prince de Monaco (1901-1902). Comptes Rendus des Séances l'Acad. Sci. **136**: 100-102.
- Lu CC. 2000. Diversity of Cephalopoda from the waters around the Tong-Sha Island (Pratas Islands), South China Sea. In YS Chow, FK Hsieh, SH Wu, WH Chou, eds. Proceedings of the 2000' Cross-strait Symposium on Biodiversity and Conservation. Taichung, Taiwan: National Museum of Natural Science, pp. 201-214.
- Norman MD, CC Lu. 2000. Preliminary checklist of the cephalopods of the South China Sea. Special edition on the Biodiversity of the South China Sea. Raffles Bull. Zool. **Supplement 8**: 539-567.
- Oommen VP. 1976. A new species of the genus *Opisthoteuthis* Verrill, 1883 (Cephalopoda: Mollusca) from the southwest coast of India. J. Mar. Biol. Assoc. India **18**: 368-374.
- O'Shea S. 1999. The marine fauna of New Zealand: Octopoda (Mollusca: Cephalopoda). Nat. Inst. Water Atmosph. Res. Biodivers. Mem. **112**: 1-280.
- Robson GC. 1932. A monograph of the recent Cephalopoda. Part 2. The Octopoda (excluding the Octopodinae). London: British Museum (Natural History).

- Roper CFE, GL Voss. 1983. Guidelines for taxonomic description of cephalopod species. Mem. Nat. Mus. Vict. **44**: 49-63.
- Sasaki M. 1920. Report on cephalopods collected during 1906 by the United States Bureau of Fisheries steamer "Albatross" in the northwestern Pacific. Proc. U.S. Nat. Mus. **57**: 163-203.
- Sasaki M. 1929. A monograph of the dibranchiate Cephalopoda of the Japanese and adjacent waters. J. Fac. Agric. Hokkaido Imp. Univ. **Supplement 20**: 1-356.
- Taki I. 1962. On species newly added to the fauna of Japanese. Cephalopoda. Zool. Mag. Tokyo **71**: 397-398.
- Taki I. 1963. On four newly known species of Octopoda from Japan. J. Fac. Fish. Anim. Husb. Hiroshima Univ. **5**: 57-93.
- Thiele J. 1915. Cirroteuthidae. In C Chun, Die Cephalopoden. Teil II. Myopsida. Octopoda. *Wissenschaftliche Ergebnisse der deutschen Tiefsee-Expedition auf dem Dampfer "Valdivia" 1898-1899*, **18**: 421-426. (translated from the German by Israel Program for Scientific Translations, Jerusalem 1975).
- Verrill AE. 1883. Supplementary report on the Blake cephalopods. Bull. Mus. Comp. Zool. **11**: 105-123.
- Villanueva R, MA Collins, P Sanchez, NA Voss. 2002. Systematics, distribution and biology of the cirrate octopods of the genus *Opisthoteuthis* (Mollusca, Cephalopoda) in the Atlantic Ocean, with description of two new species. Bull. Mar. Sci. **71**: 933-985.
- Villanueva R, RE Young, M Vecchione. 2008. *Opisthoteuthis* Verrill 1883. Flapjack devilfishes. Version 28 Apr. 2008 (under construction). Available at <http://tolweb.org/Opisthoteuthis/20106/2008.04.28> in The Tree of Life Web Project, <http://tolweb.org/> (Accessed June 2009).
- Voss GL. 1982. *Grimptoteuthis bruni*, a new species of finned octopod (Octopoda: Cirrata) from the southern Pacific. Bull. Mar. Sci. **32**: 426-433.
- Voss GL. 1988. Evolution and phylogenetic relationships of deep-sea octopods (Cirrata and Incirrata). In MR Clarke, ER Trueman, eds. The Mollusca. Vol. 12. Paleontology and neontology of cephalopods. London: Academic Press, pp. 253-276.