

## Scientific Note

### NEW RECORDS OF FISHES FROM LANYU (BOTEL TOBAGO), TAIWAN<sup>1</sup>

SIN-CHE LEE

*Institute of Zoology  
Academia Sinica  
Taipei, Taiwan  
Republic of China*

(Received March 5, 1980)

**T**hirteen species of reef fishes collected from the rocky tidal pools of Lanyu during August 1978 and June 1979 are new additions to the ichthyofauna of Taiwan. Descriptions are kept as brief as possible, and therefore, no synonyms and distributions of the species are attempted. All specimens except *Anarchias allardicei* are deposited at the Museum of the Institute of Zoology, Academia Sinica. Counts of finrays and vertebrae were based on their radiographs.

The author wishes to acknowledge his indebtedness to Dr. J.E. Randall of the Bishop Museum, Hawaii for identifying *Anarchias allardicei* and *Calotomus sandvicensis*.

#### Family Muraenidae

##### *Anarchias allardicei* Jordan & Starks

(Fig. 1)



Fig. 1. *Anarchias allardicei*, 122 mm total length.

1 specimen of 122 mm total length collected from Yeiu on August 16, 1978 is deposited at Bishop Museum, Hawaii.

##### *Enchelynassa canina* (Quoy & Gaimard)

(Fig. 2)



Fig. 2. *Enchelynassa canina*, 562 mm total length.

1 specimens of 562 mm total length was collected from Lantao on August 17, 1978. Head 6.46, body depth 15.88, predorsal length 9.69, preanal length 1.97 in total length. Snout 5.44, eye 11.45, interorbital space 9.15 in head length. Body slightly compressed; anus at about middle of total length; dorsal fin origin between rear end of mouth cleft and gill opening; lower jaws not completely closed due to long canine teeth; anterior nostril tubular with long bilobed flap reaching to the edge of upper lip when depressed; posterior nostril at dorsal frontal edge of eye; color in life dark brown with white edges in dorsal and anal fins.

#### Family Antennariidae

##### *Histiophyrne bougainvilli* (Cuvier & Valenciennes)

(Fig. 3)

2 specimens of 84 mm and 78 mm standard length were collected from Lantao on October

1. Paper No. 209 of the Journal Series of the Institute of Zoology, Academia Sinica.



Fig. 3. *Histiophyrne bougainvilli*, 78 mm standard length.

18, 1978. D. O+I+I+13; A. 7; P. 8; V. 5; C. 10. Head 1.95–2.05, body depth 1.59–1.60 in standard length. Snout 5.85–6.14, eye 11.32–11.88, interorbital space 3.11–3.31 in head length. Skin completely smooth; first dorsal spine absent, second and third spines separated and hidden in heavy skin; dorsal and anal rays simple, their last rays united by membranes with caudal base; caudal rays branched except the outermost ones; gill-opening small rounded, adjacent to the elbow of pectoral; small conical teeth in jaws, vomer and palatines; color in life pink-brown with dark blotches.

#### Family Anomalopidae

##### *Anomalopsis katapron* (Bleeker)

(Fig. 4)

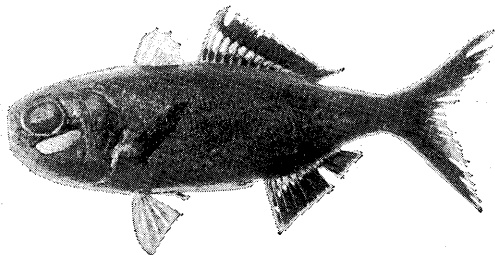


Fig. 4. *Anomalopsis katapron*, 91 mm standard length.

1 specimen of 91 mm standard length was collected from Tungching on April 25, 1979. D<sup>1</sup>V; D<sup>2</sup>I, 14; A. I, 7; P. 17; V. I, 5; C. 22; L1.73. Head 3.18, body depth 2.98 in standard length. Snout 8.94, eye 2.42, interorbital space 2.72 in head length. Body with small ctenoid

scales, forming a keel on middle of belly; snout very short and blunt; mouth large, extending almost to the hind margin of eye; bands of teeth in jaws and palatines but none in vomer; eyes much large with a suborbital luminous organ and a sery of black papillae on postorbital margin; color of body and fins in life brown, second dorsal with a basal and a submarginal black bands, anal with a wider submarginal black band.

#### Family Serranidae

##### *Epinephelus melanostigma* Schultz

(Fig. 5)



Fig. 5. *Epinephelus melanostigma*, 101 mm standard length.

2 specimens of 101–128 mm standard length were collected from Hongtuo on June 26, 1979. D. XI, 15; A. III, 8; P. 19; L1. 90–92. Head 2.32–2.37, body depth 3.01–3.18 in standard length. Snout 4.91–5.58, eye 4.94–5.19, interorbital space 6.75–7.25, pectoral 1.70–1.74 in head length. A single black blotch on VIII–XI dorsal spines, brown hexagonal blotches on back and sides of body including head, dorsal and caudal fins and widely separated round blotches on belly are characteristic features of this species.

#### Family Grammistidae

##### *Pogonoperca punctata* (Cuvier & Valenciennes)

(Fig. 6)

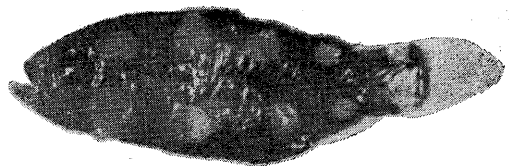


Fig. 6. *Pogonoperca punctata*, 13 mm standard length.

1 juvenile specimen of 13 mm standard length was collected from Hongtuo on June 24, 1979. D. VIII, 13; A. III, 8. Purplish brown with white round blotches on body sides.

### Family Apogonidae

#### *Gymnapogon annona* Whitley

(Fig. 7)

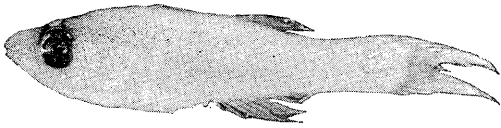


Fig. 7. *Gymnapogon annona*, 28.2 mm standard length.

1 specimen of 28.2 mm standard length was collected from Hongtuo on October 19, 1978. D<sup>1</sup>. VI; D<sup>2</sup>. I, 10; A. II, 9; P. 14; branched caudal rays 13. Head 2.88, body depth 3.92 in standard length. Snout 4.90, eye 3.63, interorbital space 4.45 in head length. Body naked; preopercle with a spine and flap; maxilla beyond the hind margin of eye; caudal fin deeply forked with two sharp lobes; color in life uniformly yellowish.

### Family Scaridae

#### *Calotomus sandwicensis* (Cuvier & Valenciennes)

(Fig. 8)

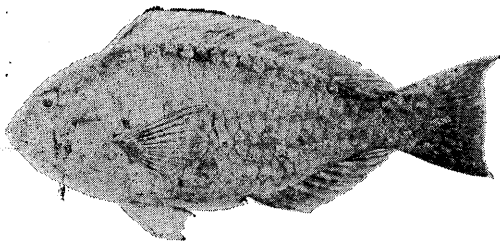


Fig. 8. *Calotomus sandwicensis*, 169.5 mm standard length.

1 specimen of 169.5 mm standard length was collected from Lantao on October 18, 1978. D. IX, 10; A. II, 9; P. 12; V. I, 5; branched caudal rays 11; L1.25. Head 3.20, body depth 2.45 in standard length. Snout 3.53, eye

5.41, interorbital space 3.66 in head length. Anterior part of both jaws with rows of imbricated incisor-like teeth, each side of upper jaw with a strong backward-directed canine teeth; caudal fin slightly concaved; color in life generally greenish brown mottled with small spots or dots on body and fins; caudal fin white edged distally; a black spot on the membrane between first two dorsal spines; pectoral base dark.

### Family Blenniidae

#### *Praealticus margaritarius* (Snyder)

(Fig. 9)

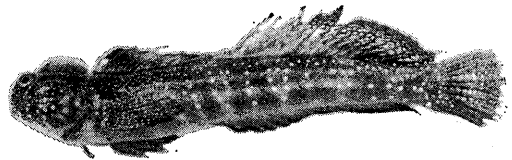


Fig. 9. *Praealticus margaritarius*, 53.8 mm standard length.

1 male specimen of 53.8 mm standard length was collected from Hongtuo on August 18, 1978. D. XII, 19; A. II, 20; P. 15; V. I, 3; branched caudal rays 9. Head 4.89, body depth 5.98 in standard length. Snout 7.33, eye 5.0, interorbital 9.17 in head length. Resembling *P. tanegashimae*, but distinguished by the former having more pectoral rays (15) and anal rays (20) and fewer dorsal spines (XII) and shorter pinnated supraorbital cirrus and absence of dark stripes on head side; body including head and fins densely scattered white spots those are scarce in *P. tanegashimae*; unlike *P. tanegashimae*, dark stripes on head sides are absent in the present species.

#### *Stanulus seychellensis* Smith

(Fig. 10)

1 specimen of 25.0 mm standard length was collected from Lantao on April 26, 1979. D. XII (last spine minute), 9; A. II, 10; P. 15; V. I, 3; branched caudal rays 9 (13 segmented rays); vertebrae 28. Head 3.47, body depth 3.57 in standard length. Snout 6.55, eye 4.0, interorbital space 14.4 in head length. Interorbital

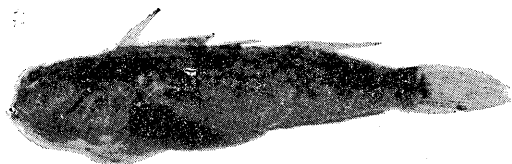


Fig. 10. *Stanulus seychellensis*, 25 mm standard length.

space 3.6 in eye diameter. Supraorbital cirrus absent; ground color in life pale yellowish with brown-orange reticular patterns on upper half of body; pectoral base with an arch-like bright-orange marking.

#### Family Gobiidae

##### *Bathygobius petrophilus* (Bleeker) (Fig. 11)



Fig. 11. *Bathygobius petrophilus*, 71 mm standard length.

3 specimens of 59.8–72.7 mm standard length were collected from Tungching on August 19, 1978. D<sup>1</sup>. VI; D<sup>2</sup>. I, 9; A. I, 7–8; P. 22; V. I, 5; predorsal scales 30–32; 11.40–42. Head 2.86–3.03, body depth 3.97–4.27 in standard length. Snout 3.97–4.76, eye 4.31–4.76, interorbital space 7.14–7.50 in head length. Distinguished from *B. scapulopunctatus* and *B. fuscus* by the former having scales on cheek, opercle and interorbital space; color in life dark red with dark brown markings on upper part of body, all fins except caudal dark spotted.

#### Family Acanthuridae

##### *Acanthurus leucopareius* (Jenkins) (Fig. 12)

2 specimens of 85.0 and 99.3 mm standard length were collected from Hongtou on October 19, 1978 and June 24, 1979 respectively. Other 3 specimens of 65–76 mm standard length were

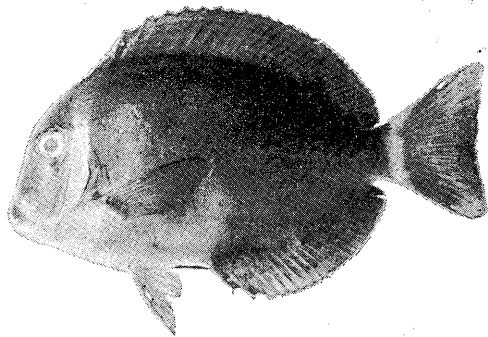


Fig. 12. *Acanthurus leucopareius*, 75 mm standard length.

collected from Lantao on August 17, 1978. D. IX, 25–26; A. III, 23–24; P. 16. Head length 3.61–4.08, body length 1.70–1.86 in standard length. Snout 2.07–2.65, eye 2.79–3.67, interorbital space 2.27–2.65 in head length. Body with small scales. Ground color in life purplish brown with orange-brown lines on body sides, dorsal and anal fins; distinct white bands at posterior part of head and caudal base.

#### Family Siganidae

##### *Siganus argenteus* (Quoy & Gaimard)

1 juvenile specimen of 34 mm standard length was collected from Lantao on June 23, 1979. D. XIII, 10; A. VII, 9; P. 17. Head 3.58, body depth 3.40 in standard length. Snout 3.39, eye 3.17, interorbital space 3.06 in head length. Distinguished by its longer body shape, however, it may be a juvenile stage of the related *S. rostratus* (Valenciennes).

#### REFERENCES

1. ALLEN, G. R. (1975) *Damselfishes of the south seas*. T. F. H. Pub., Neptune City. 237pp.
2. CHEN, J. T. F. (1969) *A synopsis of the vertebrates of Taiwan*, vol. 1. Commercial Book Co., Taipei. 548pp.
3. de BEAUFORT, L. F. and J. C. BRIGGS (1962) *The fishes of the Indo-Australian Archipelago*, vol. 11. E. J. Brill, Leiden. 481pp.
4. KOUMANS, T. P. (1953) *The fishes of Indo-Australian Archipelago*, vol. 10. E. J. Brill, Lei-

- den. 423pp.
5. MATSUBARA, K. (1955) *Fish morphology and hierachy*, vols. 1-3. Ishizaki Shoten, Tokyo. 1605pp. (in Japanese).
  6. MASUDA, H., C. ARAGA and T. YOSHINO (1975) *Coastal fishes of southern Japan*. Tokai Univ. Press, Tokyo. 379pp.
  7. MUNRO, I. S. R. (1967) *The fishes of New Guinea*. Dept. Agric., Stock Fish., Port Moresby, New Guinea. 650pp.
  8. RANDALL, J. E. (1956) A revision of the surgeon fish genus *Acanthurus*. *Pacif. Sci.* **10**(2): 159-235.
  9. SCHULTZ, L. P. and COLLABORATORS (1953, 1960 and 1966) *Fishes of the Marshall and Marianas Island*. Vols. 1-3. *U. S. Nat. Mus. Bull.* 202.
  10. SEALE, A. (1909) New species of Philippine fishes. *Philipp. J. Sci.* **4**(6): 491-453.
  11. SMITH, J. L. B. (1959) Fishes of the families Blenniidae and Salariaidae of the western Indian Ocean. *Ichthyol. Bull.* **14**: 229-252.
  12. SPRINGER, V. G. (1968) The Indo-Pacific blennioid fish genus *Stanulus*, with description of a new species from the Great Barrier Reef (Blenniidae: Blenniinae, Salariaiini). *Proc. Biol. Soc. Washington.* **81**: 111-122.
  13. WEBER, M. and L. F. de BEAUFORT (1929) *The fishes of the Indo-Australian Archipelago*. Vol. 5. E. J. Brill, Leiden. 458pp.

## 記採自蘭嶼之臺灣新紀錄種魚類

李 信 徹

本文記載 *Enchelynassa canina*, *Anarchias allardicei*, *Histiophrnye bougainwilli*, *Anomalopsis kataptron*, *Epinephelus melanostigma*, *Pogonoperca punctata*, *Gymnapogon anmona*, *Calotonus sandwicensis*, *Praealticus margaritarius*, *Stanulus seychillensis*, *Bathygobius petrophilus*, *Acanthurus leucopareius* 及 *Siganus argenteus* 等十三種採自蘭嶼岩礁潮間帶之新紀錄種魚類。