

**Revising Spider Egg-predating Fly Records (Diptera: Sarcophagidae): New Insights on Prey, Taxonomy, and Distribution of *Sarcophaga (Mehria) lorosa* Hall in Southern South America**

Filipe Macedo Gudin<sup>1,\*</sup>, Diego Galvão de Pádua<sup>2</sup>, Pablo Ricardo Mulieri<sup>3</sup>, Benito Cortés-Rivas<sup>4</sup>, Andrés Moreira-Muñoz<sup>5</sup>, and Rodrigo de Oliveira Araujo<sup>2,4</sup>

<sup>1</sup>Corresponding author: Departamento de Zoologia, Instituto de Biociências, Universidade de São Paulo, Rua do Matão, Trav. 14, 101, Cidade Universitária, CEP 05508-090, São Paulo, São Paulo, Brazil. \*Correspondence: E-mail: [filipe.gudin@gmail.com](mailto:filipe.gudin@gmail.com) (Gudin)

<sup>2</sup>Centro de Investigación de Estudios Avanzados del Maule, Vicerrectoría de Investigación y Postgrado, Universidad Católica del Maule, Avenida San Miguel, 3605, Talca, Chile. E-mail: [paduadg@gmail.com](mailto:paduadg@gmail.com) (Pádua); [rodrigobioz@gmail.com](mailto:rodrigobioz@gmail.com) (de Oliveira Araujo)

<sup>3</sup>Consejo Nacional de Investigaciones Científicas y Técnicas, División Entomología, Museo Argentino de Ciencias Naturales “Bernardino Rivadavia”, Avenida Angel Gallardo, 470, Buenos Aires, Argentina. E-mail: [mulierii@yahoo.com](mailto:mulierii@yahoo.com) (Mulieri)

<sup>4</sup>Laboratorio de Ecología de Abejas, Departamento de Ciencias Biológicas y Químicas, Facultad de Ciencias Básicas, Universidad Católica del Maule, Avenida San Miguel, 3605, Talca, Chile. E-mail: [benitocortes.r@outlook.com](mailto:benitocortes.r@outlook.com) (Cortés-Rivas)

<sup>5</sup>Instituto de Geografía, Pontificia Universidad Católica de Valparaíso, Avenida Brasil 2241, Valparaíso, Chile. E-mail: [andres.moreira@pucv.cl](mailto:andres.moreira@pucv.cl) (Moreira-Muñoz)

(Received 7 July 2023 / Accepted 27 December 2023 / Published -- 2024)

Communicated by Y. Miles Zhang

ORCID

FMG: <https://orcid.org/0000-0002-1081-7597>

DGP: <https://orcid.org/0000-0001-5061-2978>

PRM: <https://orcid.org/0000-0002-3849-4144>

BCR: <https://orcid.org/0000-0002-5782-4268>

AMM: <https://orcid.org/0000-0002-9136-1391>

ROA: <https://orcid.org/0000-0002-9438-3238>

Flesh flies (Diptera: Sarcophagidae) exhibit a wide range of feeding habits including necrophagy, coprophagy, kleptoparasitism, parasitism, and predation. Among them, species of *Sarcophaga* Meigen belonging to the subgenera *Baranovisca* Lopes and *Mehria* Enderlein are specialized predators of spider eggs. These flies hover around the spider webs and lay their larvae on the spider egg sac. While progress has been made on the taxonomy of *Baranovisca* and *Mehria* in recent

decades, our knowledge about their biology, prey selection, and distribution remains limited, restricting our understanding of the evolutionary dynamics of Sarcophagidae-Araneae interactions. Here, we describe and illustrate the first record of *S. (M.) lorosa* Hall preying on egg sacs of *Metepeira galathea* (Thorell) (Araneae: Araneidae) in Chile. The taxonomy of *S. (M.) lorosa* is revised, with two new junior synonyms proposed: *Weyrauchimyia ruficauda* Lopes and Tibana, syn. nov., and *Arachnidomyia travassosi* Tibana and Mello, syn. nov. Furthermore, we present an annotated catalog that comprehensively reviews the existing records of spider egg-predating Sarcophagidae, and provide an overview of the evolution of Sarcophagidae-Araneae interactions. Our catalog includes information on at least four species of *Baranovisca* and 10 species of *Mehria* that have been documented as preying on eggs from species of various spider families, such as Araneidae, Cheiracanthiidae, Clubionidae, Philodromidae, Salticidae, and Tetragnathidae. These records cover all biogeographical regions except the Afrotropical. Our results contribute to enhancing our understanding of Sarcophagidae-Araneae interactions, shedding light on the evolution of these interactions.

**Key words:** Araneidae, Coevolution, Egg sacs, *Metepeira*, Oviposition strategy

Citation: Gudin FM, de Pádua DG, Mulieri PR, Cortés-Rivas B, Moreira-Muñoz A, de Oliveira Araujo R. 2024.

Revising spider egg-predating fly records (Diptera: Sarcophagidae): New insights on prey, taxonomy, and distribution of *Sarcophaga (Mehria) lorosa* Hall in southern South America. Zool Stud **63**:07.

## BACKGROUND

Flesh flies (Diptera: Sarcophagidae) are often considered as necrophagous or coprophagous flies, although there are several lineages with parasitoid or predatory habits (Pape 1996; Pape and Dahlem 2010). The subfamily Miltogramminae contains a large clade of kleptoparasitic species (Piwczynski et al. 2017), while parasitoid and predatory larvae are frequently found in species of the subfamilies Paramacronychiinae and Sarcophaginae, attacking mostly invertebrates such as insects, snails, millipedes, earthworms, and spiders, but even producing myiasis in a long range of vertebrates (Aldrich 1914; Pape 1996). For instance, the largest genus of the family, *Sarcophaga* Meigen, includes approximately 890 species classified in several subgenera worldwide (Buenaventura et al. 2017), some of which are adapted to parasitism or predation.

*Sarcophaga* larvae of the subgenera *Baranovisca* Lopes and *Mehria* Enderlein are specialized predators of spider eggs; the females hover around and fly through the spider web,

trying to reach the egg sac, where they lay one larva per attack (Lubin 1974; Hieber and Uetz 1990; Rayor and Uetz 1990; Hieber et al. 2002). The larva then enters the egg sac and eats the eggs, thus completing its development. Some flies of the families Bombyliidae, Chloropidae, Ephydriidae, and Phoridae, and wasps of the family Ichneumonidae are also specialized parasitoids or predators of spider eggs (Sobczak et al. 2012; Fritzén and Sääksjärvi 2016; Villanueva-Bonilla et al. 2016; Gillung and Borkent 2017; Riccardi and Pádua 2021; Souza-Santiago et al. 2023). However, in some cases, the incidence of flesh flies is much higher than that of the other parasitoids/predators (Hieber and Uetz 1990).

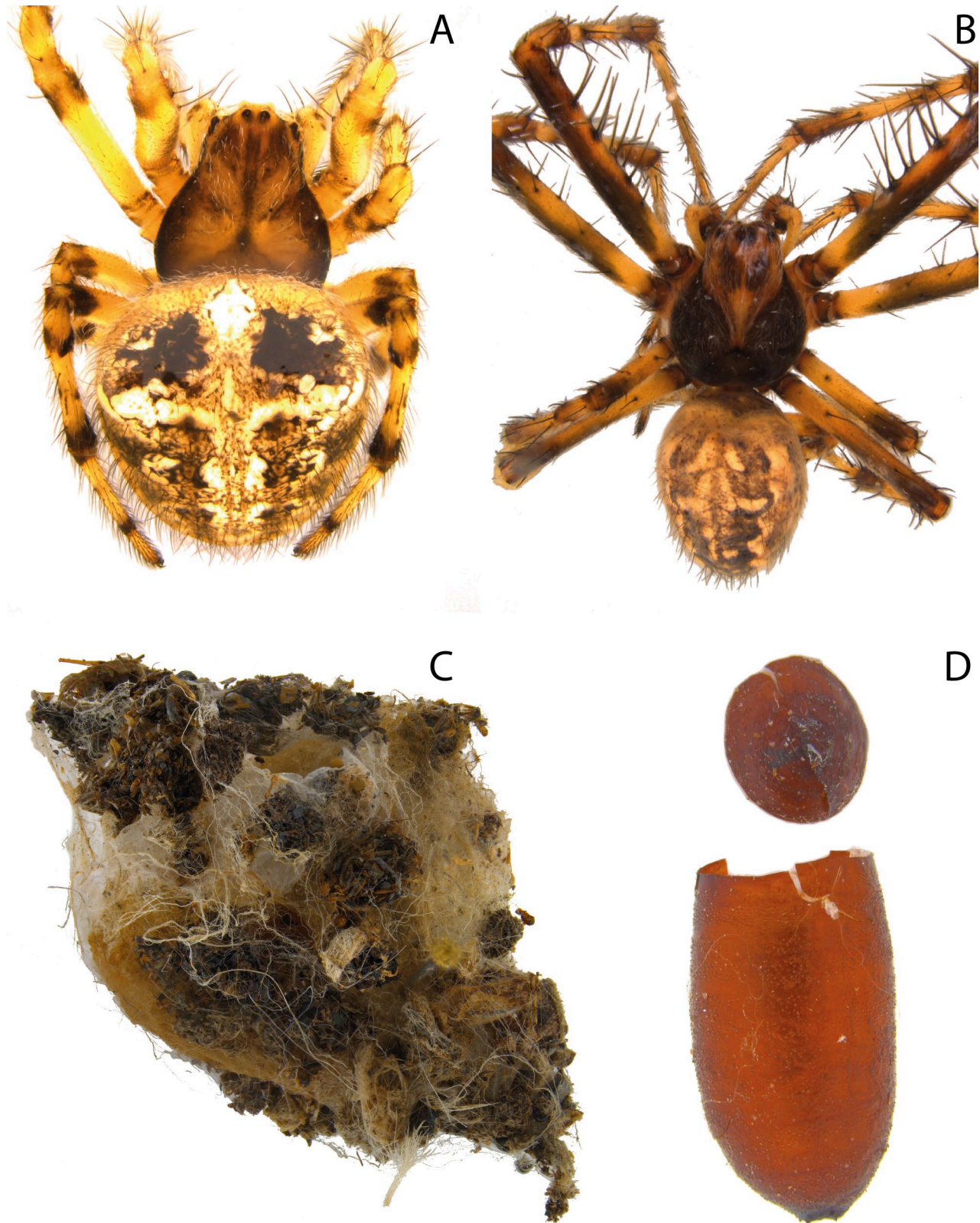
The subgenus *Baranovisca* includes six species distributed in the Australasian and Oriental regions, while *Mehria* includes 15 species distributed in the Nearctic, Neotropical, and Palaearctic regions (Pape 1996). Although the taxonomy of these species has been improved with detailed descriptions and illustrations during the final decades of the last century (Lopes 1946 1959 1981 1985 1989; Cantrell 1981; Tibana and Mello 1992), information about their biology, prey, and distribution is restricted to a few species, which hinders a deeper understanding of the evolution of Sarcophagidae-Araneae interactions. Most records of flesh flies preying on spider eggs were recently listed (Gillung and Borkent 2017), but not all were included.

Here, we record for the first time the interaction of *Sarcophaga* (*Mehria*) *lorosa* Hall preying on egg sacs of *Metepeira galatheae* (Thorell) (Araneae: Araneidae) during a desert bloom in Copiapó and Huasco provinces from the Atacama region, Chile (Chávez et al. 2019). The taxonomy and nomenclature of *S. (M.) lorosa* is revised, including notes on type material and new distribution records. Furthermore, we propose two new junior synonyms: *Weyrauchimyia ruficauda* Lopes and Tibana, syn. nov., and *Arachnidomyia travassosi* Tibana and Mello, syn. nov. Finally, we present an annotated catalog that comprehensively reviews the existing records of spider egg-predating Sarcophagidae and provide an overview of the evolution of Sarcophagidae-Araneae interactions.

## MATERIALS AND METHODS

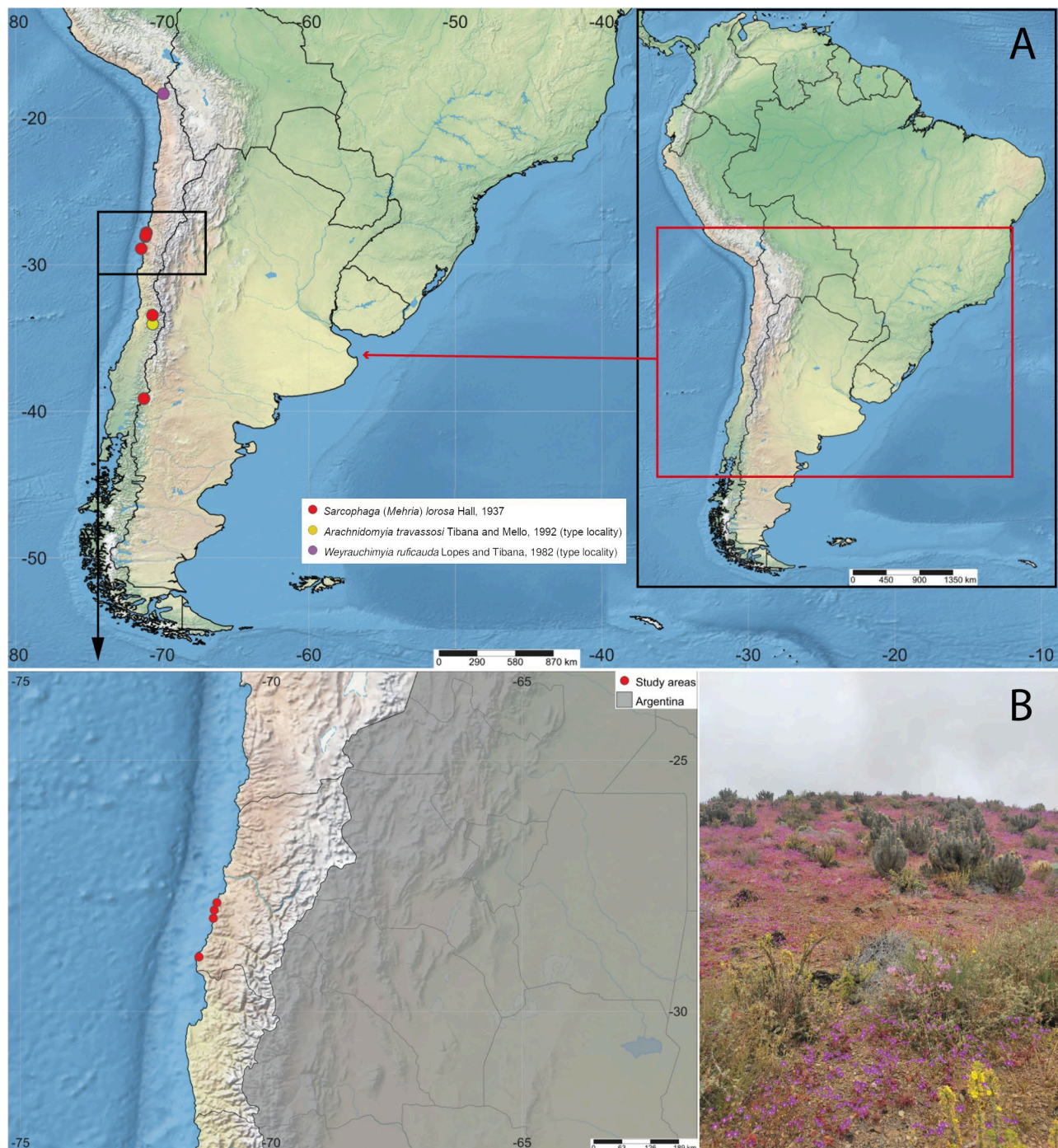
*Metepeira galatheae* adults ( $n = 20$ : 5 ♂, 15 ♀) (Fig. 1A, B) and egg sacs ( $n = 21$ ) (Fig. 1C) were manually collected at four localities from two provinces in the Atacama region during a desert bloom (16–17 November 2022): Copiapó Province: Sector Totoral (27°50'14"S, 71°05'05"W); and Huasco Province: Parque Nacional Llanos del Challe (28°08'55"S, 71°09'24"W), Quebrada Honda (27°59'22,30"S, 71°08'14"W), and Parque Eólico Cabo Leones (28°55'14"S, 71°26'38"W) (Fig. 2B). The collected egg sacs and spiders were deposited in Falcon tubes, closed with voile, and

transported to the Laboratorio de Ecología de Abejas of the Universidad Católica del Maule (UCM), Talca, Chile. All egg sacs and spiders were kept separately in Falcon tubes at room temperature (27–30°C).



**Fig. 1.** Record of *Sarcophaga (Mehria) lorosa* Hall (Diptera: Sarcophagidae) in *Metepeira galatheae* (Thorell) (Araneae: Araneidae). A–C, Female, male and egg sac of *M. galatheae*, respectively; D, Puparium of *S. (M.) lorosa*.





**Fig. 2.** A, Distribution map of *Sarcophaga (Mehria) lorosa* Hall, highlighting the type localities of the junior synonyms *Arachnidomyia travassosi* Tibana and Mello, syn. nov., and *Weyrauchimyia ruficauda* Lopes and Tibana, syn. nov.; B, Study areas in Atacama region, Chile, during a flowering desert event. Map created with SimpleMappr (<https://www.simplemappr.net/>).

Specimens of *S. (M.) lorosa* were identified based on examination of the holotype male deposited in the Natural History Museum (NHMUK), in London, United Kingdom. Additional material of *S. (M.) lorosa* was obtained from the Museo Argentino de Ciencias Naturales “Bernardino Rivadavia” (MACN), Buenos Aires, Argentina. Morphological terminology follows Cumming and Wood (2017). Fly vouchers were deposited in UCM (5 ♂ and 1 ♀), spider vouchers

in UCM (13 ♀) and UNAP (5 ♂ and 2 ♀). *Metepeira galathea* specimens were identified by Dr. Andres Taucare-Rios de la Universidad Arturo Prat (UNAP), Iquique, Chile.

The catalog follows a format similar to that presented by Guimarães (1977) and Arnaud (1978). Sarcophagidae species are listed alphabetically according to their respective biogeographical regions, with valid names and junior synonyms accompanied by authorship. Published records of egg predation are given with the name of the fly followed by respective spider prey, author, year of publication, page number, locality, and notes on the record. Comments and emendations regarding taxonomy, nomenclature or reliability of the record are included in square brackets. Secondary references citing only previous records were not included. The classification of Sarcophagidae follows Pape (1996), and the classification of spiders follows Gloor et al. (2017).

Digital images were taken using a Leica MC170 HD digital camera attached to a Leica S8AP0 stereomicroscope with an LED illumination dome (Kawada and Buffington 2016). Multiple layers were stacked using the software Helicon Focus A8.1.0.0. Distributional data of *S. (M.) lorosa* were obtained directly from the labels and plotted on a map using SimpleMappr (Shorthouse 2010). When necessary, coordinates were estimated using Global Gazetteer Version 2.3.

## RESULTS

### Records of *Sarcophaga (Mehria) lorosa* in egg sacs of *Metepeira galathea*

A total of 21 egg sacs of *M. galathea* were collected and reared. Six specimens of *S. (M.) lorosa* emerged from two egg sacs (Fig. 4): four flies (4 ♂) emerged between 27–28 November 2022 from one egg sac collected on 16 November 2022, and two flies (1 ♂ and 1 ♀) emerged on 30 November 2022 from one egg sac collected on 16 November 2022. We verified that no flies emerged from the remaining 19 egg sacs and manually opened them to search for fly puparia. Nineteen hatched puparia were found in seven egg sacs (Fig. 1D): Two egg sacs with one puparium, three egg sacs with two puparia, one egg sac with five puparia, and one egg sac with six puparia. One egg sac had a puparium and a dead specimen of *S. (M.) lorosa*. Therefore, approximately 42% of the egg sacs had been attacked by *S. (M.) lorosa*.

## TAXONOMY

**Sarcophagidae Macquart, 1834**

**Subfamily Sarcophaginae Macquart, 1835**

**Genus *Sarcophaga* Meigen, 1824**

**Subgenus *Mehria* Enderlein, 1928**

***Sarcophaga (Mehria) lorosa* Hall, 1937**

(Figs. 2A, 3, 4)

*Sarcophaga lorosa* Hall, 1937:367. Holotype male (NHMUK), examined (Fig. 3A, C, E). Type locality: Chile, Santiago.

*Weyrauchimyia ruficauda* Lopes and Tibana, 1982:142. Holotype male (MNRJ, lost). Type locality: Chile, Arica y Parinacota [as Tarapacá], Lluta. [Junior secondary homonym of *Sarcophaga ruficauda* Zetterstedt, 1838.]. Syn. nov.

*Arachnidomyia travassosi* Tibana and Mello, 1992:293. Holotype male (CNC), examined (Fig. 3B, D, F). Type locality: Chile, O'Higgins, La Leonera. Syn. nov.

**Material examined:** **Argentina:** 1 ♂ (MACN): Neuquén, Parque Nacional Lanín, Ñorquinco, S 39°09,073 W 71°15,475, trampa Malaise, 9.i.2013, Olea, Mulieri and Patitucci leg.; **Chile:** 5 ♂, 1 ♀ (UCM): Huasco Province, Parque Nacional Llanos del Challe, 28°08'55"S, 71°09'24"W, reared from *Metepeira galathea* egg sacs, 27–30.xi.2022, D.G. Pádua et al. leg.

**Diagnosis:** Distinguished from the other New World species of subgenus *Mehria* by the following morphological features: (1) face with deep golden-yellow pruinosity, (2) wing vein R<sub>1</sub> with setae, (3) abdominal tergite 5 reddish or yellow, and (4) genital segments (syntergosternite 7+8 and epandrium) reddish. Phallic morphology most similar to *S. (M.) guyanensis* Lopes and *S. (M.) lindae* Lopes, but separable from *S. (M.) lindae* by the median stylus of similar length to the lateral styli and its vesica shorter than width of distiphallus; and separable from *S. (M.) guyanensis* by the shape of juxta slightly folded dorsoapically, not rounded (see Lopes 1946:125, fig. 15).

**Males** (Fig. 4A, C, E, G, H): Body length: 7–8 mm. Wing length: 5.5–6 mm ( $n = 6$ ).

**Head** (Fig. 4E): Parafacial, fronto-orbital plate, and postocular orbits with silvery gray pruinosity; frontal vitta blackish; face with deep golden-yellow pruinosity. Facial ridge setose on lower half; fronto-orbital plate and parafacial with row of setulae close to eye, parafacial with additional row of setulae in lower half. Frons 0.15–0.18 head width at level of ocellar triangle. Antenna black; first flagellomere approximately twice pedicel length; arista short plumose on proximal half. Frontal setae 10–12, well-developed, row reaching level of apex of pedicel; rows of frontal setae parallel for most of their length, diverging at the level of antennal insertion. Two reclinate orbital setae; proclinate orbital setae absent; ocellar setae developed and proclinate; outer vertical seta undifferentiated from postocular setae. Gena with silver pruinosity, covered with black setulae; genal groove blackish; postgena with silver pruinosity, covered with black setulae. Palpus, prementum, and labella blackish.

*Thorax* (Fig. 4A, C): Black with silvery-gray pruinosity. Acrostichal setae 2 + 1; dorsocentral setae 2 + 3; intra-alar setae 1 + 2; supra-alar setae 2 + 3; postpronotal setae 3–4; notopleural setae 4. Postalar wall setulose. Postalar callus with 2 setae. Proepisternum bare. Katepisternal setae 3. Scutellum with a pair of basal and subapical setae; apical setae present; discal setae absent. Wing: Tegula black; basicosta yellowish; veins brown. Costal spine not developed; third costal sector setulose ventrally; vein R<sub>1</sub> with setae dorsally; vein R<sub>4+5</sub> with setulae dorsally from base to crossvein r-m. Cell r<sub>4+5</sub> open at wing margin. Legs: Black, except for brown tarsi. Mid femur without ctenidium; mid tibia with 1 median anterior seta; posterior femur with anterodorsal row, and anteroventral row with stronger setae on median surface; posterior tibia with three dorsal setae, one anterior row, and three ventral setae. Tarsal claws long, subequal to length of tarsomere 5.

*Abdomen* (Fig. 4A, C): Syntergite 1+2 to tergite 4 black with silvery-gray pruinosity; tergite 5 reddish. Tergites 2 and 3 without median marginal setae; tergite 4 with complete row of marginal setae; tergite 5 with row of marginal setae. Sternite 5 slightly reddish and V-shaped, with fringe of setae along the median margin of each arm.

*Terminalia* (Fig. 4G, H): Syntergosternite 7+8 and epandrium reddish. Syntergosternite 7+8 with three pairs of setae. Cercus apically curved and pointed. Pregonite with rounded and well-sclerotized apex, postgonite with short setulae. Phallus with vesica bifid, short; lateral stylus well-sclerotized; juxta rounded apically, slightly folded dorsoapically.

*Female* (Fig. 4B, D, F): Differs from male as follows: Body length: 8 mm. Wing length: 6.5 mm ( $n = 1$ ). Frons 0.27 head width at level of ocellar triangle. Frontal setae 8; reclinate setae 2, with posterior seta lateroclinate; proclinate orbital setae 2; inner vertical setae parallel; outer vertical seta about 2/3 inner vertical seta. Tarsal claws shorter than tarsomere 5.

*Distribution*: Argentina (Neuquén) and Chile (Arica y Parinacota, Atacama, O'Higgins, Región Metropolitana de Santiago) (Fig. 2A).

*Remarks*: We propose *W. ruficauda* and *A. travassosi* as junior synonyms of *S. lorosa* Hall. Both nominal species share the above enumerated external characters of color of face pruinosity, wing vein R<sub>1</sub>, abdominal tergite 5, and genitalia with *S. lorosa*. They also share a short, bifid vesica, and juxta slightly folded dorsoapically, which are here considered to provide a conspecific match. Pape (1996) transferred *W. ruficauda* to *Sarcophaga* and proposed *A. travassosi* as its synonym, keeping *S. (M.) travassosi* (Tibana and Mello) as the valid name because of the secondary homonymy between *S. (M.) ruficauda* (Lopes and Tibana) and *Sarcophaga ruficauda* Zetterstedt. Unfortunately, the holotype male of *W. ruficauda* was lost in the fire that consumed most of the MNRJ entomological collection (Cunha 2018; Escobar 2018).

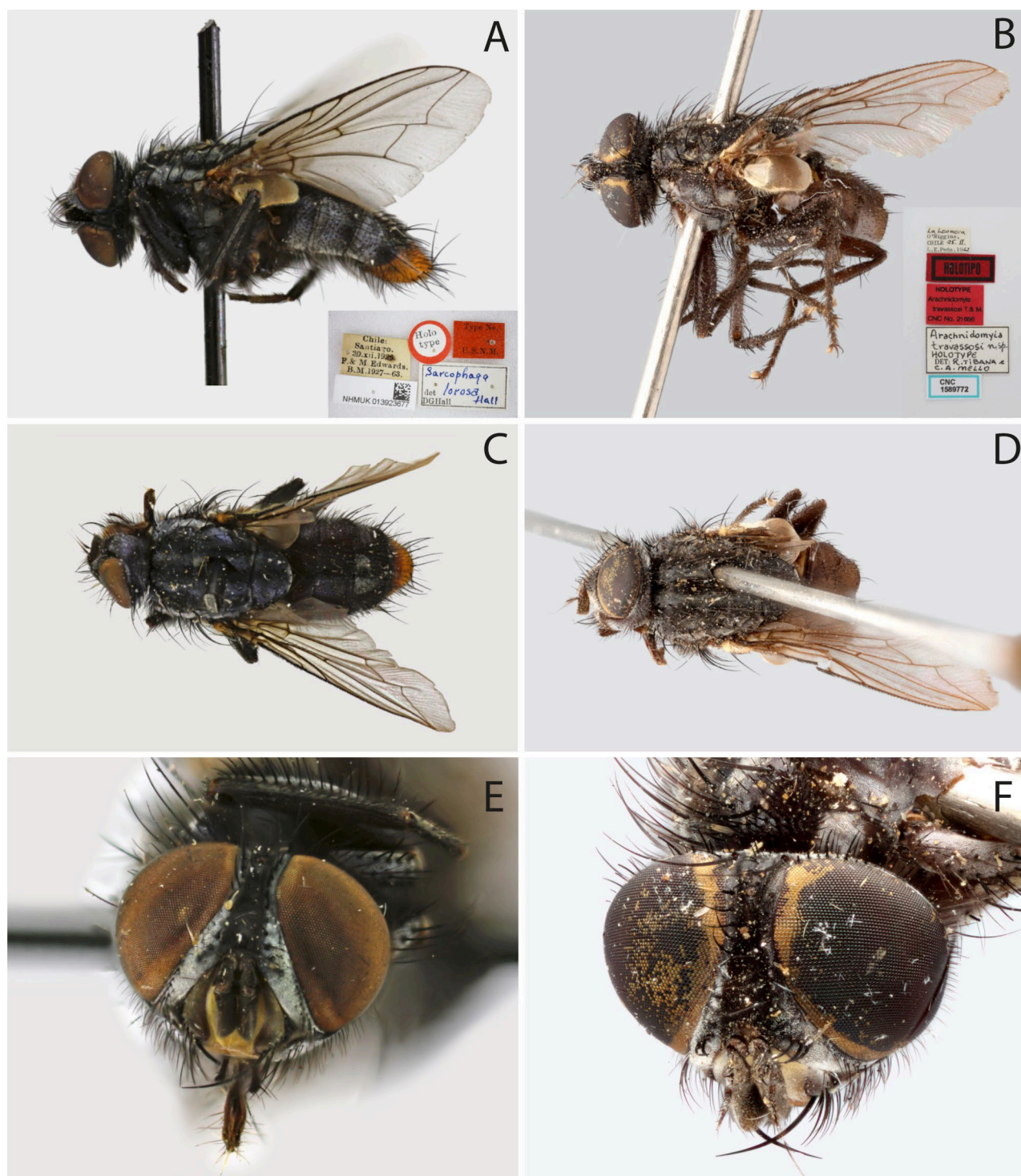
Further clarification is required regarding the type locality of *A. travassosi*. Pape (1996) recorded the city of La Leonera in the Biobío region as the type locality. However, the holotype



label explicitly states the city La Leonera in the O'Higgins region (Fig. 3B), which is more than 400 km north of La Leonera in the Biobío region. The exact locality can be verified by consulting the works of the Chilean entomologist Luis Enrique Peña, the collector of the holotype. Peña (1974) listed the type locality of several insects collected by him and included two localities in O'Higgins: La Leonera and Cerro Poqui. Cerro Poqui is a hill located at the border of the regions O'Higgins and Región Metropolitana de Santiago, which shows that Peña used O'Higgins as a reference to the O'Higgins region. Thus, there is no reason to consider that Peña was not accurate when recording La Leonera in the O'Higgins region.

The golden-yellow pruinosity on the face of *S. (M.) lorosa* is not commonly seen in Sarcophagidae and is not present in Nearctic and Palaearctic species of *Mehria*. In the Neotropical region, only *S. (M.) insularis* Lopes has the face and frontal vitta slightly golden-yellow (Lopes 1946), but lacks setae on vein R<sub>1</sub>.

Based on the specimens examined here, the distribution of *S. (M.) lorosa* seems to be restricted to southwestern South America, specifically on the western side of the Andes Mountains (Fig. 2A).



**Fig. 3.** Holotype male of *Sarcophaga lorosa* Hall (NHMUK) and holotype male of *Arachnidomyia travassosi* Tibana and Mello (CNC). A, Habitus, lateral view, and labels; B, Habitus, dorsal view; C, Head, frontal view.





A



B



C



D



E



F



G



H

**Fig. 4.** *Sarcophaga (Mehria) lorosa* Hall specimens reared from egg sacs of *Metepeira galatheae* (Thorell). A, C, E, G, H: Lateral habitus, dorsal habitus, head in frontal view, terminalia in posterior view, terminalia in lateral view of male, respectively; B, D, F: Lateral habitus, dorsal habitus, head in frontal view of female, respectively.

### Annotated catalog of records of spider egg-predating Sarcophagidae

Four species of subgenus *Baranovisca* have been recorded as egg predators from at least four species of Araneidae; and 10 species of subgenus *Mehria* have been recorded from at least 13 species of the families Araneidae, Cheiracanthiidae, Clubionidae, Philodromidae, Salticidae, and Tetragnathidae (Table 1). Records are from all biogeographical regions, except the Afrotropical.

**Table 1.** List of spider egg-predating Sarcophagidae and their respective prey according to biogeographical regions. Details about records, localities, and respective references can be found in the catalog in the main text

Sarcophagidae species	Araneae species
<b>Australasian Region</b>	
<i>Sarcophaga (Baranovisca) arachnivora</i>	Araneidae: <i>Ordgarius magnificus</i>
<i>Sarcophaga (Baranovisca) cyrtophorae</i>	Araneidae: <i>Cyrtophora moluccensis</i>
<i>Sarcophaga (Baranovisca) reposita</i>	Unidentified spider
<b>Nearctic Region</b>	
<i>Sarcophaga (Mehria) davidsonii</i>	Araneidae: <i>Argiope argentata</i> Salticidae: <i>Phidippus octopunctatus</i>
<i>Sarcophaga (Mehria) hinei</i>	Araneidae: <i>Larinioides cornutus</i> Araneidae: <i>Larinioides sclopetarius</i> Philodromidae: <i>Philodromus cespitum</i>
<i>Sarcophaga (Mehria) subaenescens</i>	Unidentified spider
<b>Neotropical Region</b>	
<i>Sarcophaga (Mehria) guyanensis</i>	Araneidae: <i>Argiope</i> sp.
<i>Sarcophaga (Mehria) insularis</i>	Unidentified spider
<i>Sarcophaga (Mehria) lindae</i>	Araneidae: <i>Metepeira atascadero</i> Araneidae: <i>Metepeira incrassata</i>
<i>Sarcophaga (Mehria) lorosa</i>	Araneidae: <i>Metepeira galatheae</i>
<i>Sarcophaga (Mehria) silbergliedi</i>	Araneidae: <i>Argiope argentata</i> Tetragnathidae: <i>Tetragnatha</i> sp.
<i>Sarcophaga (Mehria) sp.</i>	Araneidae: <i>Argiope trifasciata</i>
<b>Oriental Region</b>	
<i>Sarcophaga (Baranovisca) banksi</i>	Araneidae: <i>Argiope catenulata</i> Araneidae: <i>Argiope pulchella</i>
<b>Palearctic Region</b>	
<i>Sarcophaga (Mehria) sexpunctata</i>	Araneidae: <i>Larinioides cornutus</i> Clubionidae: <i>Clubiona</i> sp. Cheiracanthiidae: <i>Cheiracanthium punctorium</i>

### Australasian Region

*Sarcophaga (Baranovisca) arachnivora* Lopes

From egg sacs of *Ordgarius magnificus* (Rainbow).

Recorded by Lopes (1985:51, as *B. arachnivora*) as a parasite in egg sacs of *Dicrostichus magnificus* Rainbow [= *O. magnificus* (Rainbow)] in Hornsby Heights, New South Wales, Australia.

### ***Sarcophaga (Baranovisca) cyrtophorae* Cantrell**

From egg sacs of *Cyrtophora moluccensis* (Doleschall).

Recorded by Lubin (1974:329, as unidentified Sarcophagidae [identified later by Yefremova and Lubin (2020)]) as preying on eggs of *C. moluccensis* (Doleschall) at Wau Ecology Institute, Wau, Morobe, Papua New Guinea; by Cantrell (1980:42, as *Parasarcophaga reposita* Lopes [misidentification, see Cantrell (1986)]) as preying on eggs of *C. moluccensis* in Brisbane, Queensland, Australia; by Cantrell (1981:29, as *P. reposita* Lopes [misidentification, see Cantrell (1986)]) as preying on eggs of *C. moluccensis* in Queensland, Australia, and Papua New Guinea [locality not specified]; by Cantrell (1986:3, as *Parasarcophaga cyrtophorae*) as preying on eggs of *C. moluccensis* in Brisbane, Queensland, Australia; and by Yefremova and Lubin (2020:3) as preying on eggs of *C. moluccensis* at Wau Ecology Institute, Wau, Morobe, Papua New Guinea.

*Sarcophaga (Baranovisca) reposita* Lopes

From egg sacs of unidentified spider.

Recorded by Lopes (1959:65, as *Parasarcophaga (Rosellea) reposita*) as preying on eggs of an unidentified spider in Sidney, New South Wales, Australia.

## **Nearctic Region**

### ***Sarcophaga (Mehria) davidsonii* Coquillett**

From egg sacs of *Argiope argentata* (Fabricius) and *Phidippus octopunctatus* (Peckham and Peckham).

Recorded by Coquillett (1892:24) as preying on eggs of *Phidippus opifex* (McCook) [= *Attus opifex* McCook = *Attus octopunctatus* Peckham and Peckham = *Phidippus octopunctatus* (Peckham and Peckham)] in Los Angeles, Los Angeles County, California, United States of America; and by Davidson (1894:269) as preying on eggs of *A. argentata* (Fabricius) in Santa Catalina Island and Redondo Beach, Los Angeles County, California, United States of America.

### ***Sarcophaga (Mehria) hinei* Aldrich**



From egg sacs of *Larinioides cornutus* (Clerck), *L. sclopetarius* (Clerck), and *Philodromus cespitum* (Walckenaer).

Recorded by Auten (1925:244) as preying on eggs of *Aranea frondosa* Comstock [as Walckenaer, error] [= *Araneus cornutus* Clerck = *L. cornutus* (Clerck)], *Epeira sclopetaria* (Clerck) [= *Araneus sclopetarius* = *L. sclopetarius*], and *Philodromus canadensis* Emerton [= *Aranea cespitum* Walckenaer = *P. cespitum* (Walckenaer)]) in Put-In-Bay region, Ottawa County, Ohio, United States of America. Remarks: Gillung and Borkent (2017) listed these records for *S. (M.) sexpunctata* (Fabricius) as a senior synonym of *S. (M.) hinei*, following the classification in Systema Dipteriorum (Evenhuis and Pape 2022). However, this synonymy has never been published and both nominal species are considered as valid in Pape (1996). They also included *P. aureolus* (Clerck) as prey of *S. (M.) hinei* as a record made by Auten (1925), but there is no record of this spider species in the original article.

### ***Sarcophaga (Mehria) subaenescens* Aldrich**

From egg sacs of unidentified spider.

Recorded by Aldrich (1925:28) as preying on eggs of an unidentified spider in Somerville, Somerset County, New Jersey, United States of America.

### **Unidentified *Sarcophaga* Meigen**

From egg sacs of *Larinioides cornutus* (Clerck).

Recorded by Kaston and Jenks (1937:161, as *Sarcophaga* sp. (*hinei*?)) as preying on eggs of *Epeira cornuta* (Clerck) [= *Araneus cornuta* Clerck = *L. cornutus* (Clerck)] in West Haven, New Haven County, Connecticut, United States of America.

### **Neotropical Region**

#### ***Sarcophaga (Mehria) guyanensis* Lopes**

From egg sacs of unidentified *Argiope* Audouin.

Recorded by Lopes (1946:126, as *Arachnidomyia guyanensis*) as preying on eggs of unidentified *Argiope* Audouin in Berbice, Guyana.

#### ***Sarcophaga (Mehria) insularis* Lopes**

From egg sacs of unidentified spider.

Recorded by Lopes (1946:125, as *Arachnidomyia insularis*) as preying on eggs of an unidentified spider [as epeirid spider] in Haiti [locality not specified].

***Sarcophaga (Mehria) lindae* Lopes**

From egg sacs of *Metepeira atascadero* Piel and *M. incrassata* Pickard-Cambridge.

Recorded by Lopes (1989:1098, as *Arachnidomyia lindae*) as preying on eggs of *M. cf. atascadero* Piel and *M. incrassata* Pickard-Cambridge in Fortin de las Flores, Veracruz, Mexico; and by Hieber and Uetz (1990:146, as *A. lindae*) as preying on eggs of *M. atascadero* and *M. incrassata* in San Miguel de Allende, Guanajuato, and Fortin de las Flores, Veracruz, Mexico.

***Sarcophaga (Mehria) lorosa* Hall**

From egg sacs of *Metepeira galathea* (Thorell).

New record by Gudín et al. as preying on eggs of *M. galathea* (Thorell) in Copiapó and Huasco, Atacama, Chile.

***Sarcophaga (Mehria) silbergliedi* Lopes**

From egg sacs of *Argiope argentata* (Fabricius) and unidentified *Tetragnatha* Latreille.

Recorded by Lopes (1981:310, as *Arachnidomyia silbergliedi*) as preying on eggs of unidentified *Tetragnatha* Latreille in Madden Lake, Canal Zone, Panama; and by Miranda et al. (2020:10) as preying on eggs of *A. argentata* (Fabricius) in Cerro Azul, Panama City, Panama District, Panama.

**Unidentified *Sarcophaga* Meigen**

From egg sacs of *Argiope trifasciata* (Forsskål)

Recorded by Armas and Alayón García (1986:116, as unidentified *Sarcophagula* Wulp [misidentification]) as a parasitoid in egg sacs of *A. trifasciata* (Forsskål) in San Antonio de los Baños, La Habana, Cuba. Remarks: *Sarcophagula* is a subgenus of *Tricharaea* Thomson including mostly saprophagous and coprophagous species (Pape and Dahlem 2010; Patitucci et al. 2015). Therefore, the specimens recorded in egg sacs of *A. trifasciata* were misidentified and probably belong to *Sarcophaga*, subgenus *Mehria*.

## Oriental Region

### *Sarcophaga (Baranovisca) banksi* Senior-White

From egg sacs of *Argiope catenulata* (Doleschall) and *A. pulchella* Thorell.

Recorded by Prakash and Pandian (1978:210) as preying on eggs of *A. pulchella* Thorell in Idumban Pond, Ayakudi, Tamil Nadu, India; and by Shinonaga and Barrion (1980:538, as *Pierretia litsingeri* Shinonaga and Barrion [= *S. banksi* Senior-White]) as preying on eggs of *A. catenulata* (Doleschall) in Laguna, Luzon, Philippines.

## Palearctic Region

### *Sarcophaga (Mehria) sexpunctata* (Fabricius)

From egg sacs of *Cheiracanthium punctorium* (Villers), unidentified *Clubiona* Latreille, and *Larinioides cornutus* (Clerck).

Recorded by Bertkau (1880:332, as unidentified *Tachina* Meigen [misidentification; identified later by Mik (1890:153) as *Sarcophaga clathrata* Meigen = *S. (M.) sexpunctata*, and confirmed by Herting (2017)]) as preying on eggs of *Epeira cornuta* (Clerck) [= *Araneus cornuta* Clerck = *L. cornutus* (Clerck)] in Bonn, North Rhine-Westphalia, Germany; by Kryger (1910:267, as unidentified *Sarcophaga* Meigen [identified later by Lundbeck (1927:181) as *S. clathrata* = *S. (M.) sexpunctata*]) as preying on eggs of *Epeira cornuta* (Clerck) [= *Araneus cornuta* Clerck = *L. cornutus* (Clerck)] in Gribskov and Hareskoven, Zealand, Denmark; by Grunin (1964:71, as *Thyrsocnema clathrata* = *S. (M.) punctata*) as preying on eggs of unidentified *Clubiona* Latreille in Ural, Russia; by Finch (2005:2345) as preying on eggs of *L. cornutus* in Oldenburg, Lower Saxony, Germany; and by Krehenwinkel et al. (2016:1235) as preying on eggs of *C. punctorium* (Villers) in Italy [locality not specified].

## DISCUSSION

Spider egg-predating Sarcophagidae show diverse prey selection. Although the majority of records are from Araneidae, *S. (M.) davidsonii*, *S. (M.) hinei*, *S. (M.) sexpunctata*, and *S. (M.) silbergliedi* attack prey from different families of Araneomorphae (Table 1). Consequently, prey choice does not seem to be correlated with a particular spider taxon. Previous studies by Lubin (1974) and Hieber and Uetz (1990) demonstrated a positive correlation between the rate of

predation and colony size in the social spiders *C. moluccensis* and *M. incrassata*, respectively. However, it is worth noting that prey choice is not exclusively associated with social spiders as most of the records reviewed here are on solitary species.

Prey choice by predating flies may be determined by the conspicuousness and exposure level of spider egg sacs. The diversity in the shape and structure of egg sacs has been considered a significant adaptation to evade or reduce the success of parasitoids and predators (Austin 1985; Hieber 1992; Cloudsley-Thompson 1995). Hieber (1992) showed that predators that burrow into spider egg sacs, such as fly larvae, achieve higher success rates when attacking loosely woven or flocculated egg sacs than for those with denser coverings. This evidence indicates that egg sacs serve as a protective barrier against parasitoids and predators, requiring them to overcome this barrier to reach the eggs. Furthermore, in the case of the social spider *C. moluccensis*, Lubin (1974) observed that females of *S. (B.) cyrtophorae* closely inspected only webs with egg sacs within the entire colony, suggesting that these flies are attracted by the presence of conspicuous egg sacs. The egg sacs of spider species attacked by Sarcophagidae are typically conspicuous and are placed in freely exposed areas by the spider: they can be found attached to the spider web, as observed in species such as *A. argentata*, *A. pulchella*, *C. moluccensis*, and *M. incrassata* (Lubin 1974; Prakash and Pandian 1978; Hieber and Uetz 1990; Miranda et al. 2020); hanging from leaves, as in *A. catenulata* and *O. magnificus* (Todd 1988; Brown and Henderson 2019); or found attached to the vegetation, like in *P. octopunctatus* (Edwards 2004).

Although the structure and position of egg sacs provide valuable insights into the prey selection of spider egg-predating flies, the evolutionary pathways that led to this association in the *Sarcophaga* subgenera *Baranovisca* and *Mehria* remain unclear because of the absence of a phylogenetic framework. A few *Mehria* species have been sampled in phylogenetic studies aimed at elucidating the relationships within the subgenera of *Sarcophaga* (Giroux et al. 2010; Piwczynski et al. 2014; Buenaventura et al. 2017; Buenaventura and Pape 2017). However, the monophyly of *Mehria* has not been confirmed. On the other hand, *Baranovisca* species have never been sampled in phylogenetic studies of Sarcophagidae. Buenaventura (2021) proposed the first phylogenetic hypothesis of Sarcophagidae based on protein-encoding ultraconserved elements, revealing that *S. (M.) sexpunctata* is strongly supported as the basal taxon within a clade that is sister to the subgenus *Pandelleana* Rohdendorf, confirming previous findings (Piwczynski et al. 2014). In this context, larvae of *Mehria* and *Pandelleana* share similar predatory habits, as larvae of *Pandelleana* species are predators of lizard eggs (Pape and Arribas 1999). While this phylogenetic position may indicate a shared predatory habit in the most recent common ancestor of *Mehria* and *Pandelleana*, a larger sampling of both *Mehria* and *Baranovisca* species is required to confirm the robustness of these relationships and to clarify the evolution of Sarcophagidae-Araane interactions.

Despite this, some evidence indicates that the interactions between spider egg-predating Sarcophagidae and their prey might be a product of coevolution. Hieber et al. (2002) documented a set of stereotyped behaviors exhibited by *S. (M.) lindae* and *M. incrassata* females as a reaction to each other. As soon as the fly approached the web, the spider started to swing its legs towards the fly and protect the egg sac, grooming it with its chelicerae and pedipalps. In response, the fly tried to lure the spider out of the egg sac landing on the hub or signal line of the web and mimicking the vibrations of a captured prey. Moreover, the spider can distinguish the wing-beat vibration of *S. (M.) lindae* from those of other flies. Although these behavioral patterns suggest that the interaction between these two species is a result of coevolution, further studies involving diverse populations and other species of spider egg-predating Sarcophagidae are required to determine the degree of specialization in the relationship between predator and prey.

Lastly, literature records mention spider egg-predating Sarcophagidae either as a parasitoid or as a predator. Hieber et al. (2002) provided an interesting perspective on the nature of this ecological interaction based on observations of the ovi/larviposition behavior of *S. (M.) lindae* in *M. incrassata*. They argued that the behavior of these flies resembles that of a parasitoid-host system, as the female approaches the egg sac as a suitable host for larval development. However, the fly larvae feed on spider eggs within the sac, which is best described as predatory behavior. Buenaventura (2021) estimated the diversification of larval feeding habits in Sarcophagidae, considering the parasitoid habit as a variation of predation. Although the habits are interconnected, a more precise classification may be necessary to explain the transition between parasitic and predatory habits across the diverse lineages of Sarcophagidae.

## CONCLUSIONS

The evolution of Sarcophagidae-Araneae interactions still has much to be clarified, but some hypotheses discussed here can guide future studies. The subgenus *Mehria* includes 14 valid species, with *S. (M.) lorosa* as the sole species distributed in southwestern South America, specifically on the western side of the Andes Mountains. At least four *Baranovisca* and 10 *Mehria* species have been documented in the families Araneidae, Cheiracanthiidae, Clubionidae, Philodromidae, Salticidae, and Tetragnathidae. Prey selection by spider egg-predating Sarcophagidae does not seem to be correlated with a particular spider taxon; rather, the conspicuousness and exposure level of spider egg sacs may offer a more plausible explanation for prey selection by female flies. Larger sampling of *Baranovisca* and *Mehria* species in phylogenetic studies is required to confirm the validity of both subgenera and to estimate the origin of this predatory behavior in Sarcophagidae.



## List of abbreviations

CNC, Canadian National Collection of Insects, Ottawa, Canada.

MACN, Museo Argentino de Ciencias Naturales “Bernardino Rivadavia”, Buenos Aires, Argentina.

MNRJ, Museu Nacional, Rio de Janeiro, Brazil.

NHMUK, Natural History Museum, London, United Kingdom.

UCM, Laboratorio de Ecología de Abejas, Talca, Chile.

UNAP, Universidad Arturo Prat, Iquique, Chile.

**Acknowledgments:** We want to thank Marco Antonio Menezes, Museu Nacional, Rio de Janeiro, Brazil, and the staff of the library of the Instituto de Biociências da Universidade de São Paulo, Brazil, for kindly helping with access to references; Andres O. Taucare-Rios, Universidad Arturo Prat, Chile, for identifying the specimens of *Metepeira galathea*; Jimmy Cabra-García, Universidad del Valle, Colombia, for help with spider classification; and two anonymous reviewers for valuable comments and suggestions on an earlier version of the manuscript. FMG thanks Conselho Nacional de Desenvolvimento Científico e Tecnológico (CNPq, proc. 152937/2022-6) for financial support. AMM (as principal investigator) and ROA (as coinvestigator) thank Agencia Nacional de Investigación y Desarrollo (ANID), Chile, for supporting this study through FONDECYT Regular project n° 1221879. Images and data of the holotype of *S. lorosa* Hall (Fig. 3A, C, E) were provided by Natural History Museum (2014), Specimens (from Collection specimens) [Photograph], Natural History Museum, Licensed under CC-BY-4.0 (<https://creativecommons.org/licenses/by/4.0>), <https://data.nhm.ac.uk/dataset/collection-specimens/resource/05ff2255-c38a-40c9-b657-4ccb55ab2feb>. Images and data of the holotype of *S. travassosi* Tibana and Mello (Fig. 3B, D, F) were provided by the Canadian National Collection of Insects, Arachnids, and Nematodes (CNC), ©Her Majesty The Queen in Right of Canada, as represented by the Minister of Agriculture and Agri-Food, licensed under the Open Government Licence – Canada.

**Authors' contributions:** Specimen collection: DGP, BCR, AMM, and ROA. Taxonomy: FMG and PRM. Revision of records: FMG. Production of digital images: DGP, BCR, and FMG. Original draft: FMG. All authors reviewed and edited the manuscript and approved the submitted version.

**Competing interests:** The authors declare that there are no competing interests.

**Consent for publication:** Not applicable.

**Ethics approval consent to participate:** Not applicable.

## REFERENCES

- Aldrich JM. 1914. The economic relations of the Sarcophagidae. Econ Entomol **8**:242–246. doi:10.1093/jee/8.2.242.
- Aldrich JM. 1925. New Diptera or two-winged flies in the United States National Museum. Proc U S Natl Mus **66**:1–36. doi:10.5479/si.00963801.66-2555.1.
- Armas LF de, Alayón García G. 1986. Depredadores y parasitoides de *Argiope trifasciata* (Araneae: Araneidae) en el sur de La Habana. Cienc Biol (La Habana) **16**:114–117.
- Arnaud PH. 1978. A host-parasite catalog of North American Tachinidae (Diptera). U S D A Misc Publ **1319**:1–860.
- Austin AD. 1985. The function of spider egg sacs in relation to parasitoids and predators, with special reference to the Australian fauna. J Nat Hist **19**:359–376. doi:10.1080/00222938500770261.
- Auten M. 1925. Insects associated with spider nests. Ann Entomol Soc Am **18**:240–250. doi:10.1093/aesa/18.2.240.
- Bertkau P. 1880. Verzeichnis der bisher bei Bonn beobachteten Spinnen. Verh Natur Ver Preuss Rheinl Westfalens **37**:215–343.
- Brown GR, Henderson CL. 2019. First record of the grass cross spider (*Argiope catenulata*) of the family Araneidae in Australia. North Territ Nat **29**:98–102. doi:10.3316/informit.341076557507803.
- Buenaventura E. 2021. Museomics and phylogenomics with protein-encoding ultraconserved elements illuminate the evolution of life history and phallic morphology of flesh flies (Diptera: Sarcophagidae). BMC Ecol Evo **21**:70. doi:10.1186/s12862-021-01797-7.
- Buenaventura E, Pape T. 2017. Multilocus and multiregional phylogeny reconstruction of the genus *Sarcophaga* (Diptera, Sarcophagidae). Mol Phylogenet Evol **107**:619–629. doi:10.1016/j.ympev.2016.12.028.
- Buenaventura E, Whitmore D, Pape T. 2017. Molecular phylogeny of the hyperdiverse genus *Sarcophaga* (Diptera: Sarcophagidae), and comparison between algorithms for identification of rogue taxa. Cladistics **33**:109–133. doi:10.1111/cla.12161.

- Cantrell BK. 1980. A sarcophagid predator of spider eggs. News Bull Entomol Soc Queensland **8**:42–44.
- Cantrell BK. 1981. Redescription of *Parasarcophaga reposita* Lopes (Diptera: Sarcophagidae). Aust Entomol **8**:29–35. doi:10.3316/informit.134347853187353.
- Cantrell BK. 1986. Notes on the taxonomy and biology of species of *Parasarcophaga* Johnston and Tiegs and *Baranovisca* Lopes (Diptera: Sarcophagidae) associated with spiders in eastern Australia. Aust Entomol **13**:1–10. doi:10.3316/informit.123112171518658.
- Chávez RO, Moreira-Muñoz A, Galleguillos M, Olea M, Aguayo J, Latín A. 2019. GIMMS NDVI time series reveal the extent, duration, and intensity of “blooming desert” events in the hyper-arid Atacama Desert, Northern Chile. Int J Appl Earth Obs Geoinf **76**:193–203. doi:10.1016/j.jag.2018.11.013.
- Cloudsley-Thompson JL. 1995. A review of the anti-predator devices of spiders. Bull Br Arachnol Soc **10**:81–96.
- Coquillett DW. 1892. The dipterous parasite of *Melanoplus devastator* in California. Insect Life **5**:22–24.
- Cumming JM, Wood DM. 2017. 3. Adult morphology and terminology. In: Kirk-Spriggs AH, Sinclair BJ (eds) Manual of Afrotropical Diptera - Volume 1. Introductory chapters and keys to Diptera families, Suricata 4. South African National Biodiversity Institute, Pretoria, South Africa.
- Cunha MB da. 2018. Um museu em chamas: o caso do Museu Nacional do Rio de Janeiro. RICI **12**:1–3. doi:10.26512/rici.v12.n1.2019.19354.
- Davidson A. 1894. Concerning spider-egg parasites. Insect Life **6**:268–269.
- Edwards GB. 2004. Revision of the jumping spiders of the genus *Phidippus* (Araneae: Salticidae). Collect Arthropods **11**:1–158.
- Enderlein G. 1928. Klassifikation der Sarcophagiden. Sarcophagiden-Studien I. Arch Klassif Phylogenet Entomol **1**:1–56.
- Escobar H. 2018. In a ‘foretold tragedy,’ fire consumes Brazil museum. Science **361**:960–960. doi:10.1126/science.361.6406.960.
- Evenhuis NL, Pape T. 2022. Systema Dipterorum, Version 4.2.2. <http://www.diptera.org/> Accessed 30 June 2023.
- Finch O. 2005. The parasitoid complex and parasitoid-induced mortality of spiders (Araneae) in a Central European woodland. J Nat Hist **39**:2339–2354. doi:10.1080/00222930502005720.

- Fritzén NR, Sääksjärvi IE. 2016. Spider silk felting—functional morphology of the ovipositor tip of *Clistopyga* sp. (Ichneumonidae) reveals a novel use of the hymenopteran ovipositor. *Biol Lett* **12**:20160350. doi:10.1098/rsbl.2016.0350.
- Gillung JP, Borkent CJ. 2017. Death comes on two wings: a review of dipteran natural enemies of arachnids. *J Arachnol* **45**:1–19. doi:10.1636/JoA-S-16-085.1.
- Giroux M, Pape T, Wheeler TA. 2010. Towards a phylogeny of the flesh flies (Diptera: Sarcophagidae): Morphology and phylogenetic implications of the acrophallus in the subfamily Sarcophaginae. *Zool J Linn Soc* **158**:740–778. doi:10.1111/j.1096-3642.2009.00561.x.
- Gloor D, Nentwig W, Blick T, Kropf C. 2017. World Spider Catalog. Version 24. Natural History Museum Bern. <http://wsc.nmbe.ch>. Accessed 13 Mar. 2023.
- Grunin KY. 1964. On the biology and distribution of certain Sarcophaginae (Diptera, Sarcophagidae) in the USSR. *Entomol Óbozrenie* **43**:71–79. (in Russian)
- Guimarães JH. 1977. Host-parasite and parasite-host catalogue of South American Tachinidae (Diptera). *Arq Zool* **28**:1–131. doi:10.11606/issn.2176-7793.v28i3p1-131.
- Hall DG. 1937. Sarcophaginae. *In*: Diptera of Patagonia and south Chile. Part 7. British Museum (Natural History), London.
- Herting B. 2017. A critical revision of host records of Palearctic Tachinidae (Diptera) until 1937. *Stuttg Beitr Naturkd A* **10**:41–173. doi:10.18476/sbna.v10.a3.
- Hieber C, Wilcox S, Boyle J, Uetz G. 2002. The spider and fly revisited: ploy-counterploy behavior in a unique predator-prey system. *Behav Ecol Sociobiol* **53**:51–60. doi:10.1007/s00265-002-0547-2.
- Hieber CS. 1992. Spider cocoons and their suspension systems as barriers to generalist and specialist predators. *Oecologia* **91**:530–535. doi:10.1007/BF00650327.
- Hieber CS, Uetz GW. 1990. Colony size and parasitoid load in two species of colonial *Metepeira* spiders from Mexico (Araneae: Araneidae). *Oecologia* **82**:145–150. doi:10.1007/BF00323527.
- Kaston BJ, Jenks GE. 1937. Dipterous parasites of spider egg sacs. *Bull Brooklyn Entomol Soc* **32**:160–165.
- Kawada R, Buffington ML. 2016. A scalable and modular dome illumination system for scientific microphotography on a budget. *PLoS ONE* **11**:e0153426. doi:10.1371/journal.pone.0153426.
- Krehenwinkel H, Rödder D, Năpăruș-Aljančić M, Kuntner M. 2016. Rapid genetic and ecological differentiation during the northern range expansion of the venomous yellow sac spider *Cheiracanthium punctorium* in Europe. *Evol Appl* **9**:1229–1240. doi:10.1111/eva.12392.

- Kryger JP. 1910. Snyltere i Edderkoppeæg. Entomol Medd **8**:257–285. (in Danish)
- Lopes H de S. 1946. Novos sarcófagídeos neotrópicos representados na coleção do “Imperial Institute of Entomology” (Diptera, Sarcophagidae). Rev Bras Biol **6**:117–131.
- Lopes H de S. 1959. A review of Australian Sarcophagidae (Diptera). Stud Entomol **2**:33–67.
- Lopes H de S. 1981. Two new species of Sarcophagidae (Diptera) living on Arthropods. Rev Bras Entomol **25**:307–312.
- Lopes H de S. 1985. New genus of Sarcophagidae (Diptera) based on an Australian species living on spider egg cases. Aust Entomol **12**:51–53.
- Lopes H de S. 1989. On *Arachnidomyia* (Diptera, Sarcophagidae) with a new species associated to *Metepeira* spp. (Arachnida, Araneida). Rev Bras Biol **49**:1093–1099.
- Lopes H de S, Tibana R. 1982. Sarcophagid flies of Tarapaca, north of Chile (Diptera). Rev Bras Biol **4**:135–145.
- Lubin YD. 1974. Adaptive advantages and the evolution of colony formation in *Cyrtophora* (Araneae: Araneidae). Zool J Linn Soc **54**:321–339. doi:10.1111/j.1096-3642.1974.tb00806.x.
- Lundbeck W. 1927. Diptera Danica: Genera and species of flies hitherto found in Denmark. Part 7. Platypezidae, Tachinidae. G.E.C. Gad, Copenhagen.
- Macquart P-J-M. 1834. Insectes diptères du nord de la France. Tome V. Athéricères: créophiles, oestrides, myopaires, conopsaires, scénopiniens, céphalopsides. Lille.
- Macquart P-J-M. 1835. Histoire naturelle des insectes. Diptères. Tome deuxième. Paris. doi:10.5962/bhl.title.14274.
- Meigen JW. 1824. Systematische Beschreibung der bekannten europäischen zweiflügeligen Insekten. Schulz-Wundermann, Hamm.
- Mik J. 1890. Dipterologische Miscellen XVI. Wiener Entomol Ztg **9**:153–158.
- Miranda R, Santos-Murgas A, Quintero-A D, Abrego-L JC (2020) Insectos asociados a ovisacos de *Argiope argentata* (Fabricius, 1775) (Arachnida: Araneae) en Panamá. Intropica **15**:8–15. doi:10.21676/23897864.3280.
- Pape T. 1996. Catalogue of the Sarcophagidae of the world (Insecta: Diptera). Associated Publishers, Gainesville, Florida.
- Pape T, Arribas OJ. 1999. *Sarcophaga protuberans* Pandellé - an Old World predator of lizard eggs (Diptera: Sarcophagidae; Reptilia: Lacertidae). Stud Dipterol **6**:73–78.
- Pape T, Dahlem GA. 2010. Sarcophagidae (flesh flies). In: Brown VB, Borkent A, Cumming JM, et al. (eds) Manual of Central American Diptera Volume 2. National Research Council of Canada, Ottawa, Ontario, Canada.



- Patitucci LD, Mulieri PR, Domínguez MC, Mariluis JC. 2015. An inventory of saprophagous Calyptratae (Insecta: Diptera) in urban green spaces of Buenos Aires City. *Rev Mus Argent Cienc Nat* **17**:97–107. doi:10.22179/REVMACN.17.385.
- Peña LEG. 1974. Los tipos de insectos de la colección Luis E. Peña G. *Bol Soc Biol Concepc* **47**:259–282.
- Piwczyński M, Szpila K, Grzywacz A, Pape T. 2014. A large-scale molecular phylogeny of flesh flies (Diptera: Sarcophagidae). *Syst Entomol* **39**:783–799. doi:10.1111/syen.12086.
- Piwczyński M, Pape T, Deja-Sikora E et al. 2017. Molecular phylogeny of Miltogramminae (Diptera: Sarcophagidae): Implications for classification, systematics and evolution of larval feeding strategies. *Mol Phylogenet Evol* **116**:49–60. doi:10.1016/j.ympev.2017.07.001.
- Prakash RN, Pandian TJ. 1978. Energy flow from spider eggs through dipteran parasite and hymenopteran hyperparasite populations. *Oecologia* **33**:209–219. doi:10.1007/BF00344849.
- Rayor LS, Uetz GW. 1990. Trade-offs in foraging success and predation risk with spatial position in colonial spiders. *Behav Ecol Sociobiol* **27**:77–85. doi:10.1007/BF00168449.
- Riccardi PR, Pádua DG. 2021. First record of egg sac predation of the fly *Pseudogaurax cingulatus* Sabrosky (Diptera, Chloropidae) upon spider *Tetragnatha* sp. (Araneae, Tetragnathidae) in northern Brazil. *Pap Avulsos Zool* **61**:1–5. doi:10.11606/1807-0205/2021.61.04.
- Shinonaga S, Barrion AT. 1980. A new species of sarcophagid fly parasitic in the egg sac of the spider, *Argiope catenulata* (Doleschall) in the Philippines. *Kontyû* **48**:537–539.
- Shorthouse DP (2010) SimpleMappr, an online tool to produce publication-quality point maps. <https://www.simplemappr.net>. Accessed 15 Feb. 2023.
- Sobczak JF, Loffredo APS, Sobczak JCMSM. 2012. First record of egg sac predation of the wasp *Tromatobia* sp. Foster, 1869 (Hymenoptera: Ichneumonidae) upon *Araneus omnicolor* (Keyserling, 1893) (Araneae: Araneidae). *Rev Iber Aracnol* **20**:113–115.
- Souza-Santiago BK, Messas YF, de Pádua DG et al. 2023. Taking care of the enemy: egg predation by the Darwin wasp *Tromatobia* sp. (Ichneumonidae) on the cobweb spider *Chrysso compressa* (Araneae, Theridiidae). *J Hymenopt Res* **95**:103–112. doi:10.3897/jhr.95.97029.
- Tibana R, Mello CA. 1992. Uma nova espécie de *Arachnidomyia* Townsend, 1934. *Mem Inst Oswaldo Cruz* **87**:293–297. doi:10.1590/S0074-02761992000500055.
- Todd DV. 1988. An illustrated guide to the genera of orb-weaving spiders in Australia. *Mem Queensl Mus* **25**:273–332.

- Villanueva-Bonilla GA, Onody HC, Santos BF, Vasconcellos-Neto J. 2016. First record of egg sac predation on a wall crab spider Selenopidae (Araneae) by the wasp *Camera lunavenatrix* sp. n. (Ichneumonidae, Cryptinae). *J Hymenopt Res* **49**:65–79. doi:10.3897/JHR.49.7862.
- Yefremova ZA, Lubin Y. 2020. *Tachinobia repanda* (Hymenoptera: Eulophidae) from egg sacs of a colonial spider, *Cyrtophora moluccensis* (Araneae: Araneidae) in Papua New Guinea. *J Insect Sci* **20**:12. doi:10.1093/jisesa/ieaa104.
- Zetterstedt JW. 1838. Sectio tertia. Diptera. Dipterologis Scandinaviae amicis et popularibus carissimus. *In*: Zetterstedt JW (ed) *Insecta lapponica* (1838-1840). Leopold Voss, Lipsiae [= Leipzig]. doi:10.5962/bhl.title.8242.