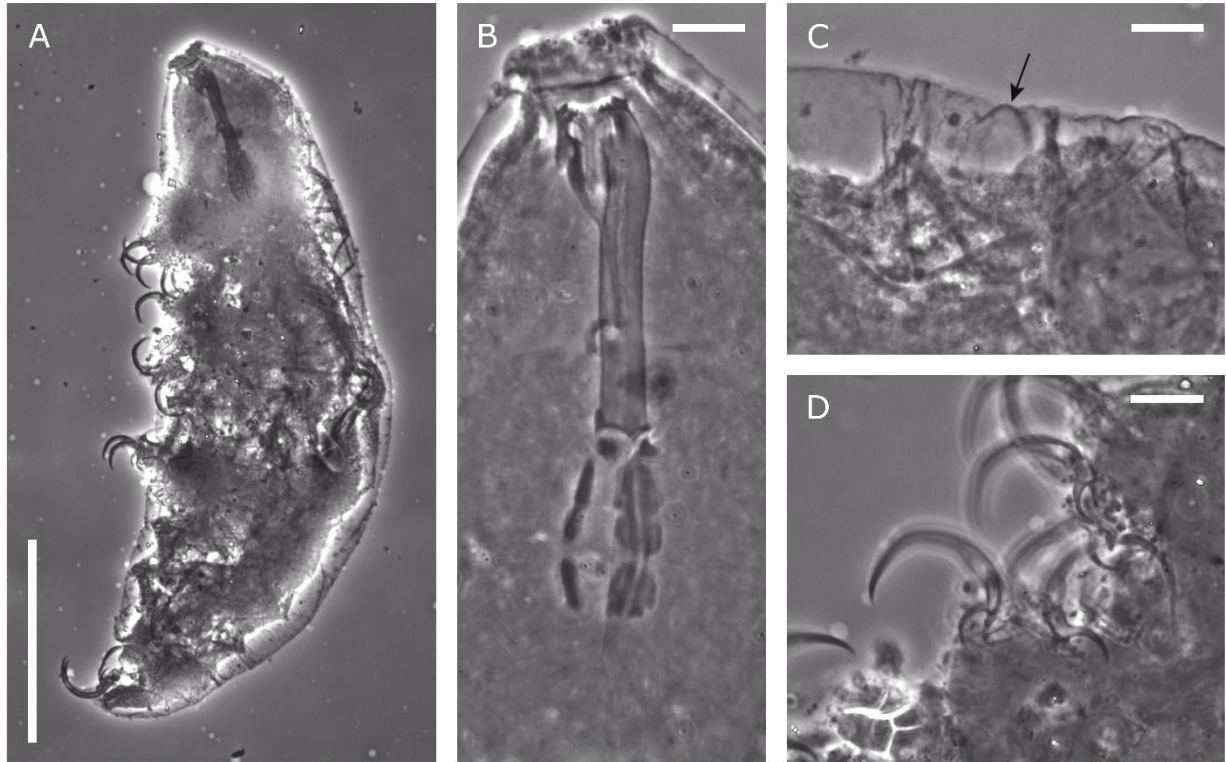


Supplementary Figure 1: *Dactylobiotus caldarellai*, Holotype (Slide No. 4300, Pilato and Binda collection, University of Catania). A: habitus. B: bucco-pharyngeal apparatus (dorso-ventral view). C: detail of the oral cavity armature. D: first pair of claws. E: claws of the hind legs.

Scalebars = A: 100 microns; B: 20 microns; C-E: 10 microns



Supplementary Figure 2: *Dactylobiotus lombardoi*, Holotype (Slide No. 4333, Pilato and Binda collection, University of Catania). A: habitus. B: bucco-pharyngeal apparatus (lateral view). C: detail of the dorso-caudal cuticle; the arrow indicates an papillar-like structure. D: second pair of claws.

Scalebars= A: 100 microns; B-D: 10 microns.